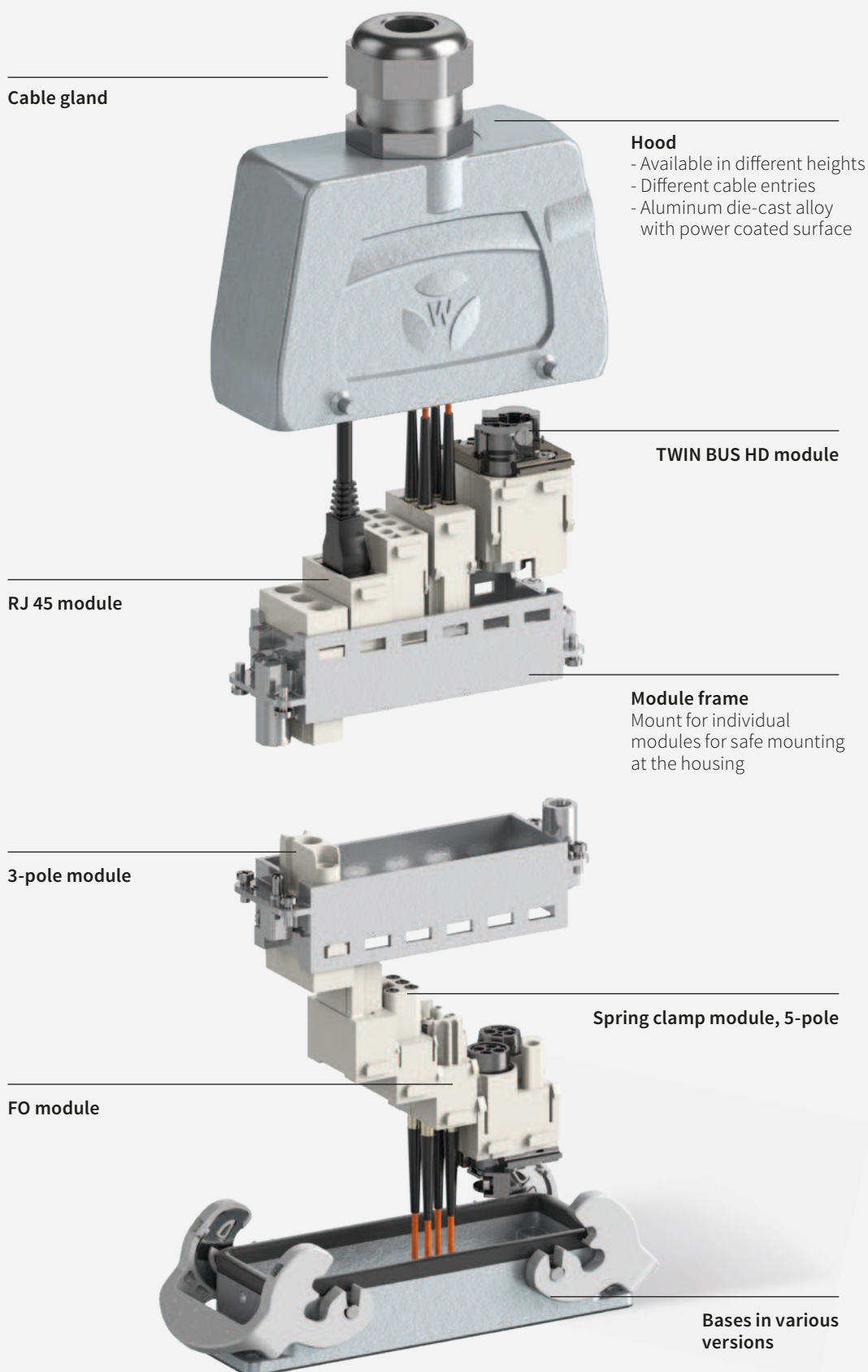


**revos** MODULAR

# PERFECTLY CONFIGURED

Modular industrial connectors for  
power, signal + communication.

# REVOS MODULAR – SYSTEM DESIGN



# REVOS MODULAR INDUSTRIAL CONNECTORS

Increase productivity with a fully customizable industrial connector that replaces the need for separate connections for power, signals, and communication.

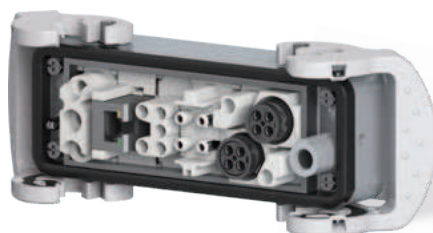
With interchangeable inserts the revos MODULAR can offer power, signal, and communication and fiber optic connections in a single adapter. Designed to reduce cabling complexity and the amount of individual connections required, this connector system is a flexible and long-term solution for modern industrial environments.

The module frame made of die-cast zinc makes it easy to assemble and disassemble the modules and is available in 4 different sizes.

The high-quality die-cast aluminum housing is powder-coated and designed for industrial use in extreme & rough environments. It provides protection against external mechanical impact, the ingress of foreign material such as dust moisture, water, oils or other liquids.

## BENEFITS:

- + POWER, SIGNAL, AND COMMUNICATION IN ONE CONNECTOR
- + FASTER INSTALLATION TIMES
- + FULLY CUSTOMIZABLE
- + EASY INSTALLATION AND REMOVAL
- + REDUCED CABLING COMPLEXITY IS POSSIBLE



## POWER

The power modules can handle 16 A to 40 A and 400 V to 830 V (UL to 600 V), and are available in as 3-, 4-, 5-, 8- and 20-pole versions, with crimp or spring clamp connection technology.



## SIGNAL

Transmit a range of signals with these 12- and 17-pole modules, for 10 A and 160 V up to 250 V (UL 600 V) with crimp connection technology.



## COMMUNICATION

Whether you have a standard Ethernet, fast fiber optic, or a shielded cable connection, we've got you covered.

# REVOS MODULAR · MODULAR INSERTS

Axial-Connection, screw connection



Male insert



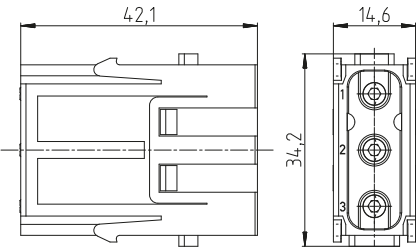
Female insert

Description	Type	Part No.	P.U.
<b>Modular insert revos MODULAR</b>			
<b>3-pole</b>			
Male insert	MOD STS 3 6 69 AG (2.5 – 6 mm²)	78.115.4056.0	10
Female insert	MOD BUS 3 6 69 AG (2.5 – 6 mm²)	78.105.4056.0	10
Male insert	MOD STS 3 10 69 AG (6 – 10 mm²)	78.115.4156.0	10
Female insert	MOD BUS 3 10 69 AG (6 – 10 mm²)	78.105.4156.0	10
<b>TECHNICAL DATA</b>			
Rated voltage	690 V		
Rated voltage according to UL	600 V		
Rated impulse voltage	8 kV		
Rated current	40 A		
Degree of pollution	3		
Insulation strip length	see below		
Contact resistance	≤ 1 mΩ		
Mating cycles	500		
Insulating material	Polycarbonate, halogen-free		
Flammability	UL 94 V-0		
Temperature range	-40 °C...+120 °C		
<b>ACCESSORIES</b>			
Axial screwdriver	POW AXIALSHR ISK SW 2	05.502.4500.0	1

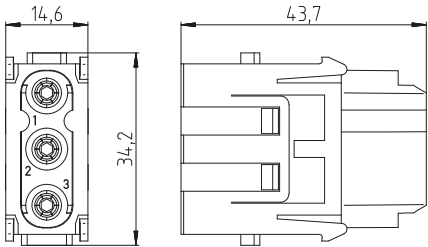
Conductor	2.5 mm²	4 mm²	6 mm²	10 mm²
Stripping Length	5+1	5+1	8+1	11+1
Tightening torque	1.5 Nm	1.5 Nm	2 Nm	2 Nm

## DIMENSIONS

Male insert



Female insert



### DERATING CURVE

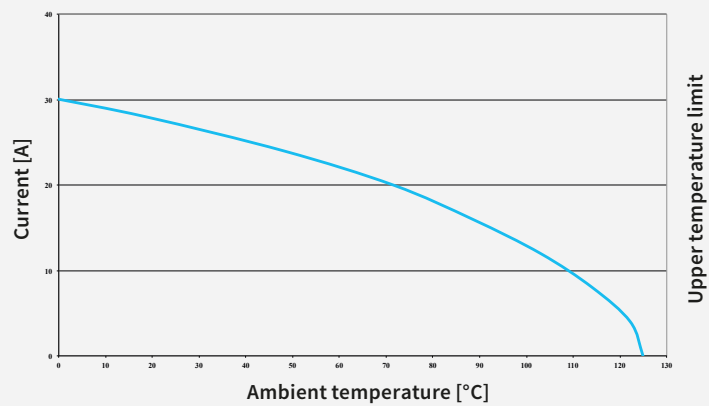
according to DIN EN 60512-5-2

Stand: 2003-1

revosMODULAR

equipped with 6 modules 78.105.4056.0  
and 78.115.4056.0

— Cable cross section 4 mm<sup>2</sup>



### DERATING CURVE

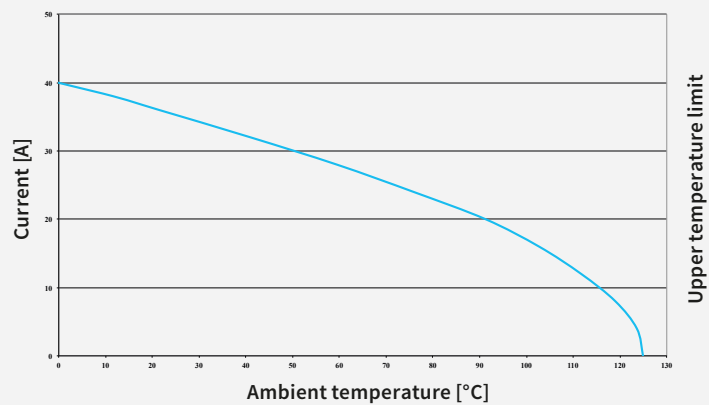
according to DIN EN 60512-5-2

Stand: 2003-1

revosMODULAR

equipped with 6 modules 78.105.4056.0  
and 78.115.4056.0

— Cable cross section 6 mm<sup>2</sup>



### DERATING CURVE

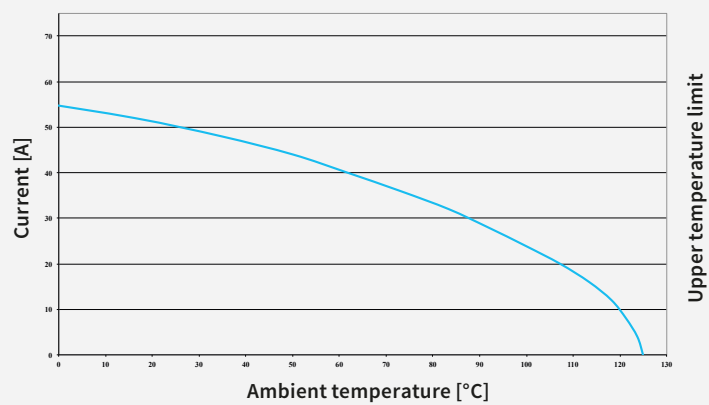
according to DIN EN 60512-5-2

Stand: 2003-1

revosMODULAR

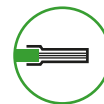
equipped with 6 modules 78.105.4156.0  
and 78.115.4156.0

— Cable cross section 10 mm<sup>2</sup>



# REVOS MODULAR · MODULAR INSERTS

3-pole, crimp connection



Male insert



Female insert

Description	Type	Part No.	P.U.
<b>Modular insert revos MODULAR</b>	<b>3-pole</b>		
Male insert	MOD STC 3 50	78.014.4056.0	10
Female insert	MOD BUC 3 50	78.004.4056.0	10

Contacts	mm <sup>2</sup> / AWG, turned Ø 4 mm		
Male contact, Ag	1.5 / 16	05.545.9200.8	100
Female contact, Ag	1.5 / 16	02.126.6700.8	100
Male contact, Ag	2.5 / 14	05.545.9300.8	100
Female contact, Ag	2.5 / 14	02.126.6800.8	100
Male contact, Ag	6.0 / 10	05.545.9500.8	100
Female contact, Ag	6.0 / 10	02.126.7000.8	100

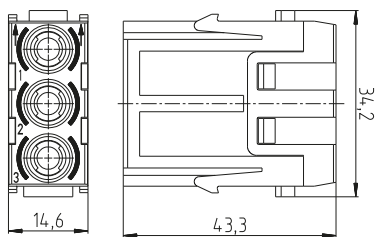
## TECHNICAL DATA

Rated voltage	500 V
Rated voltage as per UL	600 V
Rated impulse voltage	6 kV
Rated current	40 A
Pollution degree	3
Insulation strip length	9.0 mm (conductor cross-section 1.5 mm <sup>2</sup> / AWG 16 + 2.5 mm <sup>2</sup> / AWG 14) 9.6 mm (conductor cross-section 6.0 mm <sup>2</sup> / AWG 10)
Contact resistance	≤ 1 mΩ
Mating cycles	500
Isolation material	Polycarbonate
Combustibility	UL 94 V-0
Temperature range	-40 °C...+120 °C

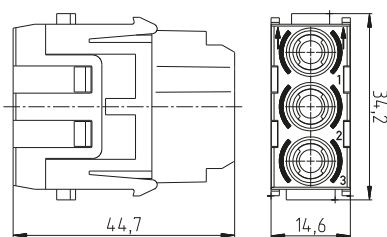
ACCESSORIES	Type	Part No.	P.U.
Crimping tool		95.101.0800.0	1
Crimping die	"H"	05.502.5000.0	1
Crimping die	"D" for 05.545.9500.8	05.502.2300.0	1
Contact positioner	"6"	05.502.5200.0	1
Extraction tool		05.502.4400.0	1

## DIMENSIONS

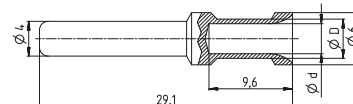
Male insert



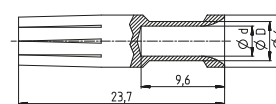
Female insert



Male contact



Female contact



## DERATING CURVE

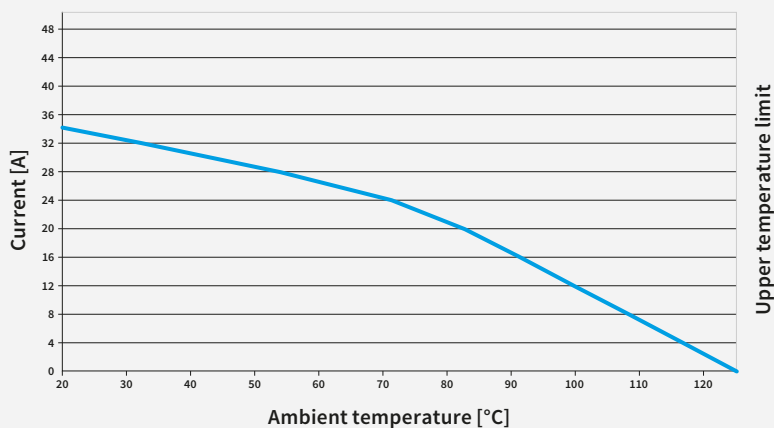
in compliance with DIN EN 60512-5-2

Last updated: 2003-1

revos MODULAR

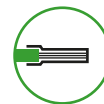
Housing size 24

equipped with 6 modules 78.014.4056.0 and 78.004.4056 and Ø 4.0 mm contacts with a rated cross-section of 6.0 mm<sup>2</sup>



# REVOS MODULAR · MODULAR INSERTS

4-pole, crimp connection



Male insert



Female insert

Description	Type	Part No.	P.U.
<b>Modular insert revos MODULAR</b>	<b>4-pole</b>		
Male insert	MOD STC 4 83	78.014.4156.0	10
Female insert	MOD BUC 4 83	78.004.4156.0	10
<b>Contacts</b>	<b>mm<sup>2</sup> / AWG, turned Ø 4 mm</b>		
Male contact, Ag	1.5 / 16	05.545.9200.8	100
Female contact, Ag	1.5 / 16	02.126.6700.8	100
Male contact, Ag	2.5 / 14	05.545.9300.8	100
Female contact, Ag	2.5 / 14	02.126.6800.8	100
Male contact, Ag	6.0 / 10	05.545.9500.8	100
Female contact, Ag	6.0 / 10	02.126.7000.8	100

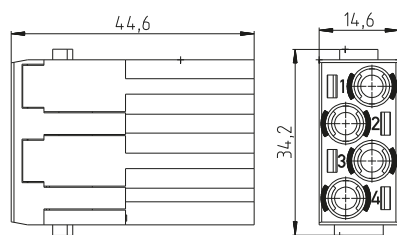
## TECHNICAL DATA

Rated voltage	830 V
Rated voltage as per UL	600 V
Rated impulse voltage	8 kV
Rated current	40 A
Pollution degree	2
Insulation strip length	9.0 mm (conductor cross-section 1.5 mm <sup>2</sup> / AWG 16 + 2.5 mm <sup>2</sup> / AWG 14) 9.6 mm (conductor cross-section 6.0 mm <sup>2</sup> / AWG 10)
Contact resistance	≤ 1 mΩ
Mating cycles	500
Isolation material	Polycarbonate
Combustibility	UL 94 V-0
Temperature range	-40 °C...+120 °C

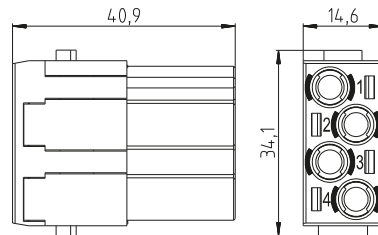
ACCESSORIES	Type	Part No.	P.U.
Crimping tool		95.101.0800.0	1
Crimping die	"H"	05.502.5000.0	1
Crimping die	"D" for 05.545.9500.8	05.502.2300.0	1
Contact positioner	"6"	05.502.5200.0	1
Extraction tool		05.502.4400.0	1

## DIMENSIONS

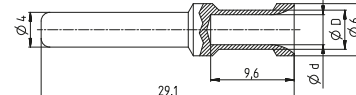
Male insert



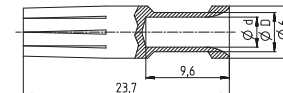
Female insert



Male contact



Female contact



## DERATING CURVE

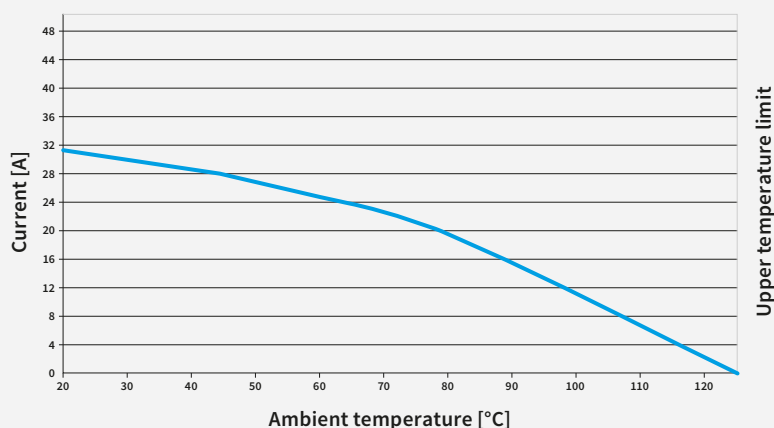
in compliance with DIN EN 60512-5-2

Last updated: 2003-1

revos MODULAR

Housing size 24

equipped with 6 modules 78.014.4156.0 and 78.004.4156.0 and Ø 4.0 mm contacts with a rated cross-section of 6.0 mm<sup>2</sup>



# REVOS MODULAR · MODULAR INSERTS

5-pole, spring clamp connection



Male insert



Female insert

Description	Type	Part No.	P.U.
<b>Modular insert revos MODULAR</b>	<b>5-pole</b>		
Male insert	MOD STF 5 2,5 40 AG	78.213.4056.0	10
Female insert	MOD BUF 5 2,5 40 AG	78.203.4056.0	10

## TECHNICAL DATA

Rated voltage	L-PG 230 V / L-L 400 V
Rated voltage as per UL	600 V
Rated impulse voltage	4 kV
Rated current	16A
Pollution degree	2
Insulation strip length	7.0 mm – 9.0 mm

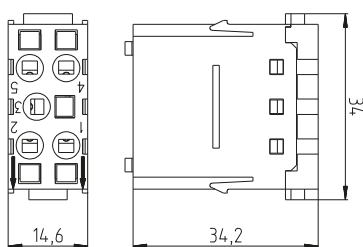
## Rated cross-section

EN 60999	0.14 – 2.5 mm <sup>2</sup>
UL	26 - 14 AWG
Mating cycles	500
Contact resistance	≤ 3 mΩ
Isolation material	Polycarbonate
Combustibility	UL 94 V-0
Temperature range	-40 °C...+120 °C

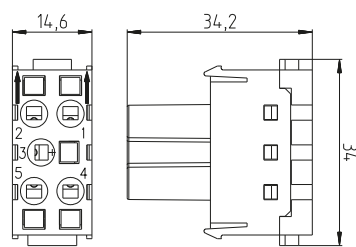
ACCESSORIES	Type	Part No.	P.U.
Screwdriver	DIN 5264 A 0.6X3.5 mm	06.502.4000.0	5

## DIMENSIONS

Male insert



Female insert



## DERATING CURVE

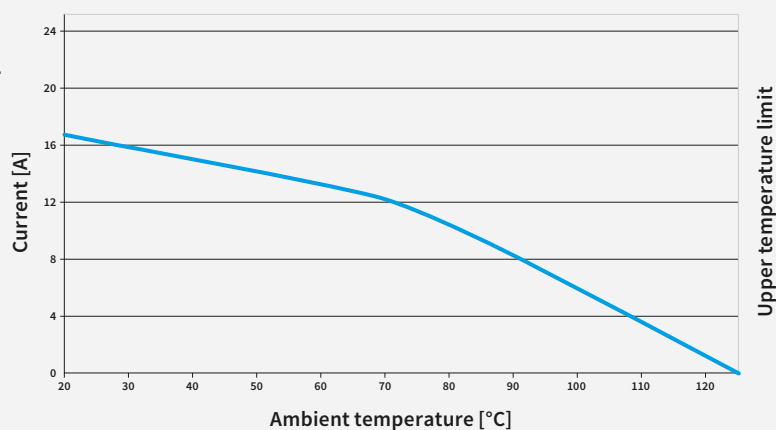
in compliance with DIN EN 60512-5-2

Last updated: 2003-1

revos MODULAR

Housing size 24

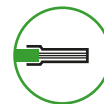
equipped with 6 modules 78.213.4056.0 and 78.203.4056.0 and Ø 2.5 mm contacts with a rated cross-section of 2.5 mm<sup>2</sup>





# REVOS MODULAR · MODULAR INSERTS

8-pole, crimp connection



Male insert



Female insert

Description	Type	Part No.	P.U.
<b>Modular insert revos MODULAR</b>	<b>8-pole</b>		
Male insert	MOD STC 8 40	78.013.4056.0	10
Female insert	MOD BUC 8 40	78.003.4056.0	10

Contacts	mm <sup>2</sup> / AWG, turned Ø 2.5 mm		
Male contact, Ag	0.5 / 20	05.545.8600.8	100
Female contact, Ag	0.5 / 20	02.126.6100.8	100
Male contact, Ag	0.75 / 18	05.545.8700.8	100
Female contact, Ag	0.75 / 18	02.126.6200.8	100
Male contact, Ag	1.0 / 18	05.545.8800.8	100
Female contact, Ag	1.0 / 18	02.126.6300.8	100
Male contact, Ag	1.5 / 16	05.545.8900.8	100
Female contact, Ag	1.5 / 16	02.126.6400.8	100
Male contact, Ag	2.5 / 14	05.545.9000.8	100
Female contact, Ag	2.5 / 14	02.126.6500.8	100
Male contact, Ag	4.0 / 12	05.545.9100.8	100
Female contact, Ag	4.0 / 12	02.126.6600.8	100

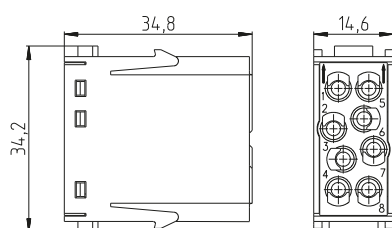
## TECHNICAL DATA

Rated voltage	400V
Rated voltage as per UL	600 V
Rated impulse voltage	6 kV
Rated current	16A
Pollution degree	3
Insulation strip length	7.5 mm
Contact resistance	≤ 1 mΩ
Mating cycles	500
Isolation material	Polycarbonate
Combustibility	UL 94 V-0
Temperature range	-40 °C...+120 °C

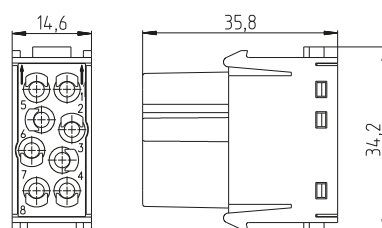
ACCESSORIES	Type	Part No.	P.U.
Crimping tool		95.101.0800.0	1
Crimping die	"G"	05.502.4900.0	1
Contact positioner	"5"	05.502.5100.0	1
Extraction tool		05.502.3500.0	1

## DIMENSIONS

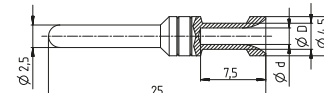
Male insert



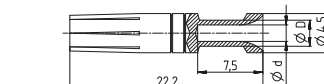
Female insert



Male contact



Female contact



## DERATING CURVE

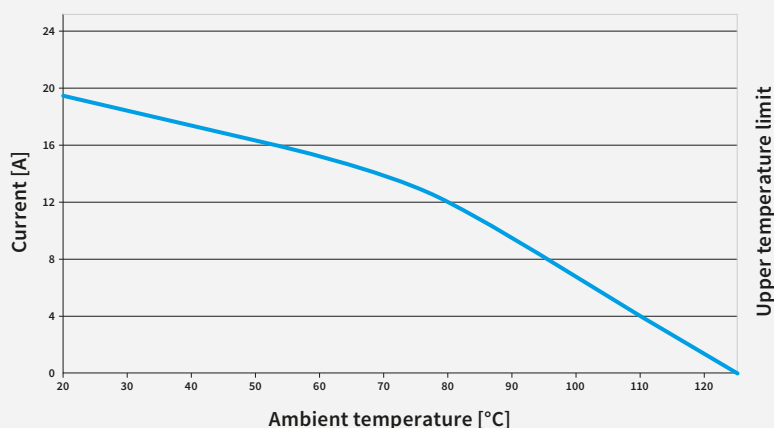
in compliance with DIN EN 60512-5-2

Last updated: 2003-1

revos MODULAR

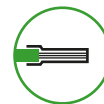
Housing size 24

equipped with 6 modules 78.013.4056.0 and 78.003.4056.0 and Ø 2.5 mm contacts with a rated cross-section of 2.5 mm<sup>2</sup>



# REVOS MODULAR · MODULAR INSERTS

12-pole, crimp connection



Male insert



Female insert

Description	Type	Part No.	P.U.
<b>Modular insert revos MODULAR</b>	<b>12 pole</b>		
Male insert	MOD STC 12 25	78.012.4056.0	1
Female insert	MOD BUC 12 25	78.002.4056.0	1
<b>Contacts</b>	<b>mm<sup>2</sup> / AWG, turned Ø 1.6 mm</b>		
Male contact, Ag	0.14 - 0.37 / 26 - 22	05.545.7900.8	1
Female contact, Ag	0.14 - 0.37 / 26 - 22	02.126.5400.8	1
Male contact, Ag	0.5 / 20	05.545.8000.8	1
Female contact, Ag	0.5 / 20	02.126.5500.8	1
Male contact, Ag	0.75 / 18	05.545.8100.8	1
Female contact, Ag	0.75 / 18	02.126.5600.8	1
Male contact, Ag	1.0 / 18	05.545.8200.8	1
Female contact, Ag	1.0 / 18	02.126.5700.8	1
Male contact, Ag	1.5 / 16	05.545.8300.8	1
Female contact, Ag	1.5 / 16	02.126.5800.8	1

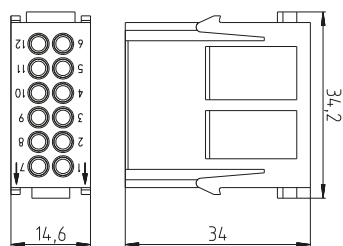
## TECHNICAL DATA

Rated voltage	250 V
Rated voltage as per UL	600 V
Rated impulse voltage	4 kV
Rated current	10 A
Pollution degree	3
Insulation strip length	8.0 mm
Contact resistance	≤ 3 mΩ
Mating cycles	500
Isolation material	Polycarbonate
Combustibility	UL 94 V-0
Temperature range	-40 °C...+120 °C
Certificates / approvals	cRUus

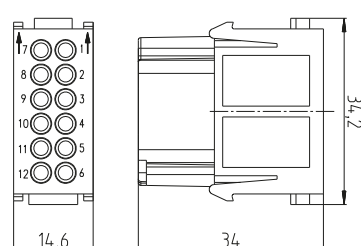
ACCESSORIES	Type	Part No.	P.U.
Crimping tool		95.101.0800.0	1
Crimping die	"G"	05.502.4900.0	1
Contact positioner	"5"	05.502.5100.0	1
Extraction tool		05.502.0710.0	1

## DIMENSIONS

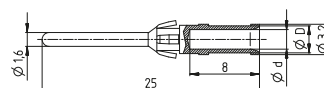
Male insert



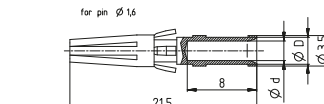
Female insert



Male contact



Female contact



## DERATING CURVE

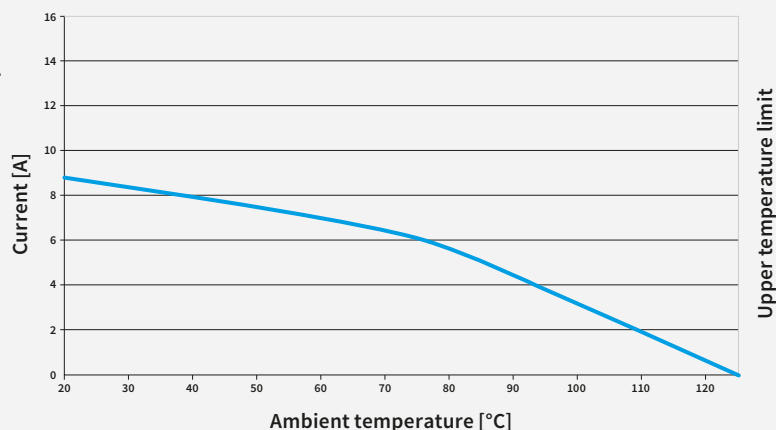
in compliance with DIN EN 60512-5-2

Last updated: 2003-1

revos MODULAR

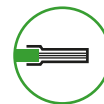
Housing size 24

equipped with 6 modules 78.012.4056.0 and 78.002.4056.0 and Ø 1.6 mm contacts with a rated cross-section of 1.5 mm<sup>2</sup>



# REVOS MODULAR · MODULAR INSERTS

17-pole, crimp connection



Male insert



Female insert

Description	Type	Part No.	P.U.
<b>Modular insert revos MODULAR</b>	<b>17 pole</b>		
Male insert	MOD STC 17 16	78.012.4156.0	10
Female insert	MOD BUC 17 16	78.002.4156.0	10
<b>Contacts</b>	<b>mm<sup>2</sup> / AWG, turned Ø 1.6 mm</b>		
Male contact, Ag	0.14 - 0.37 / 26 - 22	05.545.7900.8	100
Female contact, Ag	0.14 - 0.37 / 26 - 22	02.126.5400.8	100
Male contact, Ag	0.5 / 20	05.545.8000.8	100
Female contact, Ag	0.5 / 20	02.126.5500.8	100
Male contact, Ag	0.75 / 18	05.545.8100.8	100
Female contact, Ag	0.75 / 18	02.126.5600.8	100
Male contact, Ag	1.0 / 18	05.545.8200.8	100
Female contact, Ag	1.0 / 18	02.126.5700.8	100
Male contact, Ag	1.5 / 16	05.545.8300.8	100
Female contact, Ag	1.5 / 16	02.126.5800.8	100

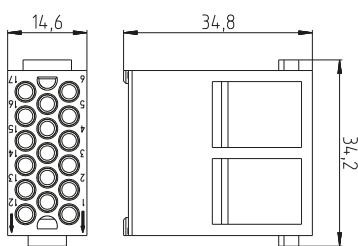
## TECHNICAL DATA

Rated voltage	160 V
Rated voltage as per UL	600 V
Rated impulse voltage	2.5 kV
Rated current	10 A
Pollution degree	2
Insulation strip length	8.0 mm
Contact resistance	≤ 3 mΩ
Mating cycles	500
Isolation material	Polycarbonate
Combustibility	UL 94 V-0
Temperature range	-40 °C...+120 °C

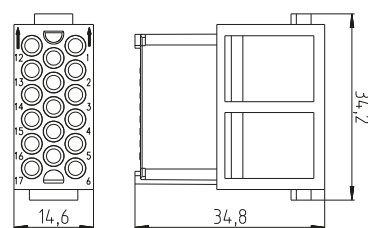
ACCESSORIES	Type	Part No.	P.U.
Crimping tool		95.101.0800.0	1
Crimping die	"G"	05.502.4900.0	1
Contact positioner	"5"	05.502.5100.0	1
Extraction tool		05.502.0710.0	1

## DIMENSIONS

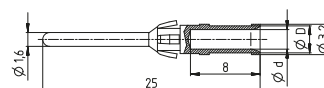
Male insert



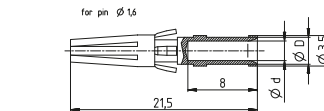
Female insert



Male contact



Female contact



## DERATING CURVE

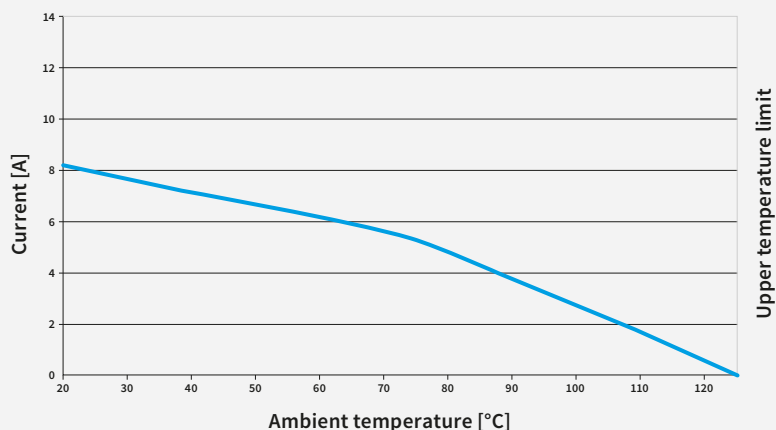
in compliance with DIN EN 60512-5-2

Last updated: 2003-1

revos MODULAR

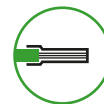
Housing size 24

equipped with 6 modules 78.012.4156.0 and 78.002.4156.0 and Ø 1.6 mm contacts with a rated cross-section of 1.5 mm<sup>2</sup>



# REVOS MODULAR · MODULAR INSERTS

20-pole, crimp connection



Male insert



Female insert

Description	Type	Part No.	P.U.
<b>Modular insert revos MODULAR</b>	<b>20-pole</b>		
Male insert	MOD STC 20 50	78.013.4156.0	10
Female insert	MOD BUC 20 50	78.003.4156.0	10
<b>Contacts</b>	<b>mm<sup>2</sup> / AWG, turned Ø 2.5 mm</b>		
Male contact, Ag	0.5 / 20	05.545.8600.8	100
Female contact, Ag	0.5 / 20	02.126.6100.8	100
Male contact, Ag	0.75 / 18	05.545.8700.8	100
Female contact, Ag	0.75 / 18	02.126.6200.8	100
Male contact, Ag	1.0 / 18	05.545.8800.8	100
Female contact, Ag	1.0 / 18	02.126.6300.8	100
Male contact, Ag	1.5 / 16	05.545.8900.8	100
Female contact, Ag	1.5 / 16	02.126.6400.8	100
Male contact, Ag	2.5 / 14	05.545.9000.8	100
Female contact, Ag	2.5 / 14	02.126.6500.8	100
Male contact, Ag	4.0 / 12	05.545.9100.8	100
Female contact, Ag	4.0 / 12	02.126.6600.8	100

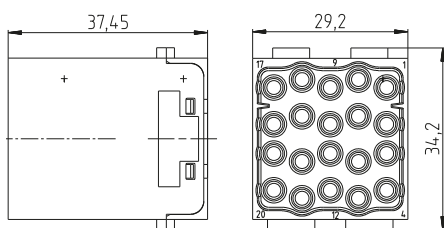
## TECHNICAL DATA

Rated voltage	500 V
Rated voltage as per UL	600 V
Rated impulse voltage	6 kV
Rated current	16A
Pollution degree	3
Insulation strip length	7.5 mm
Contact resistance	≤ 1 mΩ
Mating cycles	500
Isolation material	Polycarbonate
Combustibility	UL 94 V-0
Temperature range	-40 °C...+120 °C

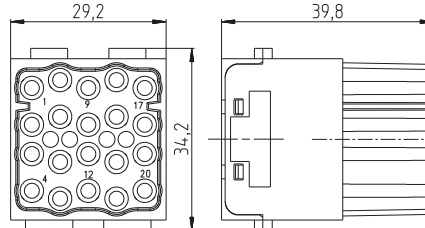
ACCESSORIES	Type	Part No.	P.U.
Crimping tool		95.101.0800.0	1
Crimping die	"G"	05.502.4900.0	1
Contact positioner	"5"	05.502.5100.0	1
Extraction tool		05.502.3500.0	1

## DIMENSIONS

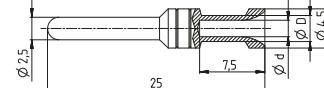
Male insert



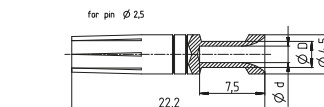
Female insert



Male contact



Female contact



## DERATING CURVE

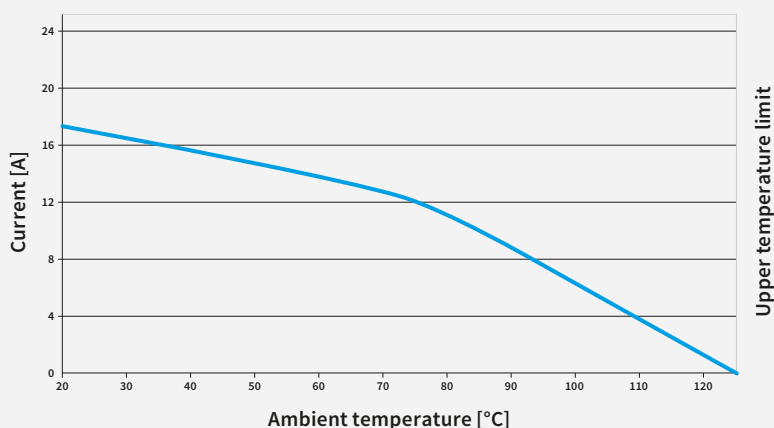
in compliance with DIN EN 60512-5-2

Last updated: 2003-1

revos MODULAR

Housing size 24

equipped with 3 modules 78.013.4156.0 and 78.003.4156.0 and Ø 2.5 mm contacts with a rated cross-section of 4.0 mm<sup>2</sup>



# REVOS MODULAR · MODULAR INSERTS

## Blank module

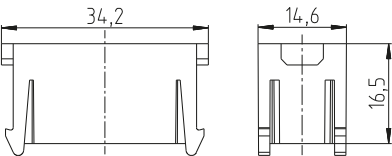


Description	Type	Part No.	P.U.
<b>Modular insert revos MODULAR</b>	<b>Blank module</b>		
Blank module	MOD DUMMY	78.990.4056.0	10

TECHNICAL DATA	
Isolation material	Polycarbonate
Combustibility	UL 94 V-0
Temperature range	-40 °C...+120 °C

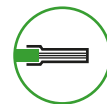
## DIMENSIONS

### Blank module



# REVOS MODULAR · MODULAR INSERTS

## TWIN BUS HD, 4-pole + Shielded braid, crimp connection



Male insert



Female insert



Male insert for contact carrier



Female insert for contact carrier



Potential adapter

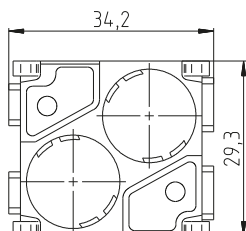
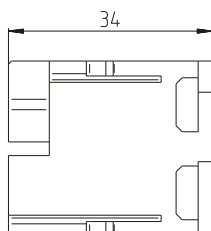
Description	Type	Part No.	P.U.
<b>Modular insert revos MODULAR</b>			
<b>Twin Bus HD</b>			
Male insert	MOD STX 2 05	78.019.4056.0	10
Female insert	MOD BUX 2 05	78.009.4056.0	10
Male contact for contact carrier	MOD STKT 4 05	Z6.562.7456.0	1
Female contact for contact carrier	MOD BUKT 4 05	Z6.562.7356.0	1
Potential adapter	MOD ZBH	Z6.562.7521.0	10
<b>Contacts</b>		<b>mm<sup>2</sup> / AWG, turned Ø 1.6 mm</b>	
Male contact, Ag	0.14 - 0.37 / 26 - 22	05.545.7900.8	100
Female contact, Ag	0.14 - 0.37 / 26 - 22	02.126.5400.8	100
Male contact, Ag	0.5 / 20	05.545.8000.8	100
Female contact, Ag	0.5 / 20	02.126.5500.8	100
Male contact, Ag	0.75 / 18	05.545.8100.8	100
Female contact, Ag	0.75 / 18	02.126.5600.8	100
Male contact, Ag	1.0 / 18	05.545.8200.8	100
Female contact, Ag	1.0 / 18	02.126.5700.8	100
Male contact, Ag	1.5 / 16	05.545.8300.8	100
Female contact, Ag	1.5 / 16	02.126.5800.8	100

TECHNICAL DATA	
Rated voltage	50 V
Rated voltage as per UL	50 V
Rated impulse voltage	0.8 kV
Rated current	10 A
Pollution degree	3
Number of contacts	0.8 kV
Screen	Screen is attached to the contact carrier through the cable clip
Outside diameter of the screened cable	3 mm - 6 mm / 6 mm - 9.5 mm
Insulation strip length	8 mm
Contact resistance	≤ 4 mΩ
Insulation resistance	≥ 10 <sup>10</sup> Ω
Mating cycles	500
Isolation material	Polycarbonate
Combustibility	UL 94 V-0
Temperature range	-40 °C...+120 °C

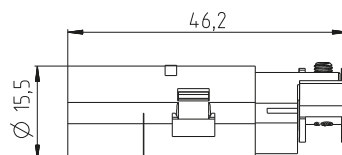
ACCESSORIES	Type	Part No.	P.U.
Crimping tool		95.101.0800.0	1
Crimping die	"G"	05.502.4900.0	1
Contact positioner	"5"	05.502.5100.0	1
Extraction tool		05.502.0710.0	1

## DIMENSIONS

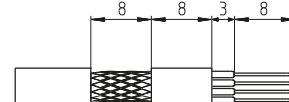
Male insert



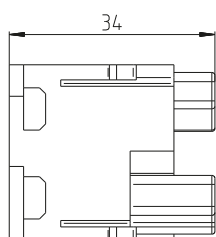
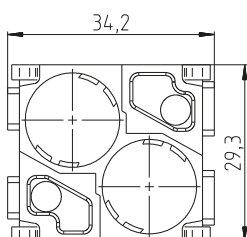
Male contact for contact carrier



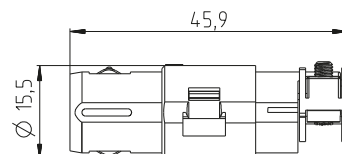
Insulation strip length



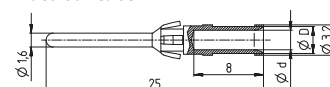
Female insert



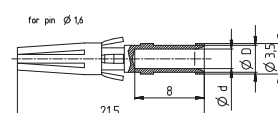
Female contact for contact carrier



Male contact



Female contact



# REVOS MODULAR · MODULAR INSERTS

## SC module, 4-pole



SC Male insert



SC Female insert



SC contact

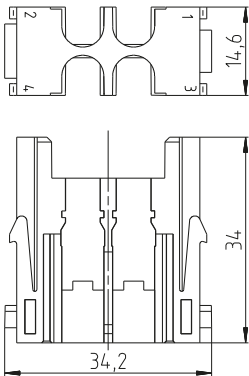
Description	Type	Part No.	P.U.
<b>Modular insert revos MODULAR</b>		<b>SC module</b>	
Male insert SC module	MOD STL LWL SC 4	78.930.4256.0	10
Female insert SC module	MOD BUL LWL SC 4	78.920.4256.0	10
Adapter			

TECHNICAL DATA	
Number of contacts	4
Insertion loss	< 0.5 dB
For GI fiber	50 - 62.5 /125 µm
Mating cycles	500
Isolation material	Polycarbonate
Combustibility	UL 94 V-0
Temperature range	-40 °C...+120 °C

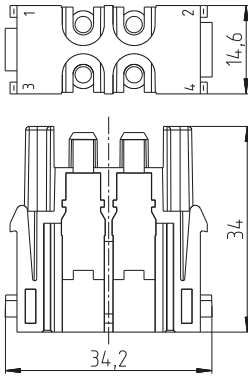
ACCESSORIES	Type	Part No.	P.U.
SC contact	MOD ZBH LWL SC	78.990.4256.0	1

## DIMENSIONS

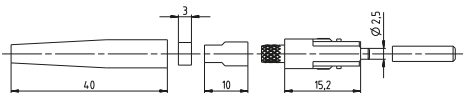
SC Male insert



SC Female insert



SC contact



# REVOS MODULAR · MODULAR INSERTS

## RJ 45



Male insert  
for adapter



Adapter for  
RJ 45 patch cable



RJ 45, Female  
insert

Description	Type	Part No.	P.U.
Modular insert revos MODULAR	RJ 45		
Male insert RJ 45	MOD ST RJ 45	78.930.4156.0	10
Adapter for male insert RJ 45	MOD ZBH RJ 45	78.990.4156.0	10
Female insert RJ 45	MOD BU RJ 45	78.920.4156.0	10

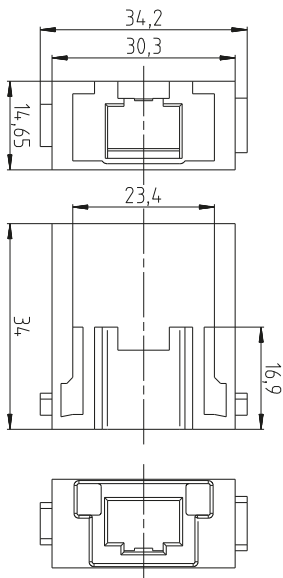
### TECHNICAL DATA

Number of contacts	8
Rated voltage	50 V
Rated voltage as per UL	< 30 V
Rated impulse voltage	0.8 kV
Rated current	1 A
Pollution degree	3
Transmission characteristics	Category 6 for Class E <sub>A</sub>
Data rate	10/100/1000 Mbps
Mating cycles	500
Isolation material	Polycarbonate
Combustibility	UL 94 V-0
Temperature range	-40 °C...+120 °C

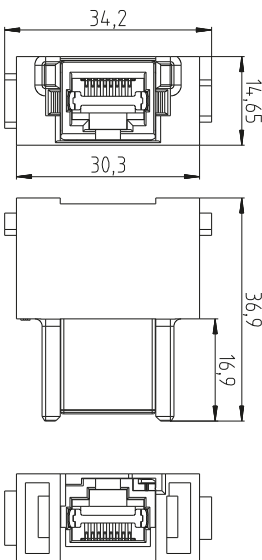
Male insert for adapter and adapter for RJ 45 patch cable are installed together.  
See picture on next page.

## DIMENSIONS

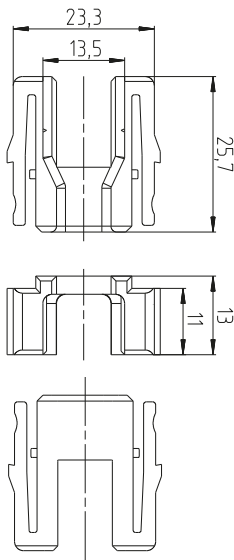
Male insert



Female insert



Adapter



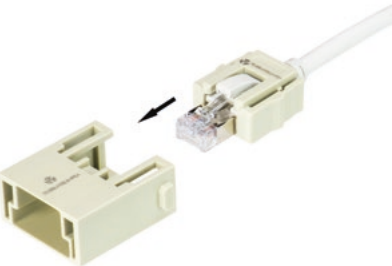


# REVOS MODULAR · MODULAR INSERTS

## RJ 45 patch cable



RJ 45 cable assembly



Installation of RJ 45 patch cable in the adapter

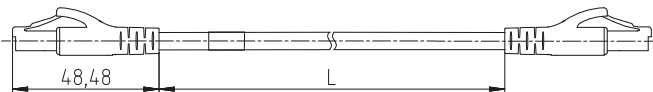
Description	Type	Part No.	P.U.
<b>900 MHz PiMF cable, on both sides with screened RJ 45 connectors</b>			
RJ 45 patch cable - 0.25 m	MOD ZBH RJ 45 0.25 m	78.999.4000.0	1
RJ 45 patch cable - 0.5 m	MOD ZBH RJ 45 0.5 m	78.999.4100.0	1
RJ 45 patch cable - 1.0 m	MOD ZBH RJ 45 1.0 m	78.999.4200.0	1
RJ 45 patch cable - 2.0 m	MOD ZBH RJ 45 2.0 m	78.999.4300.0	1
RJ 45 patch cable - 3.0 m	MOD ZBH RJ 45 3.0 m	78.999.4400.0	1
RJ 45 patch cable - 5.0 m	MOD ZBH RJ 45 5.0 m	78.999.4500.0	1
RJ 45 patch cable - 7.5 m	MOD ZBH RJ 45 7.5 m	78.999.4600.0	1
RJ 45 patch cable - 10.0 m	MOD ZBH RJ 45 10.0 m	78.999.4700.0	1

TECHNICAL DATA	
Transmission characteristics	Category 6 for Class E <sub>A</sub>
Data rate	up to 1000 Mbps
Core design	4x2xAWG26
Cable	Cu strand, uncoated
Cable sheath	LSZH sheath
Color	grey*
Temperature limit	-10 °C...+70 °C, -5 °C...+70 °C when moving

\* Cable length 0.25 m - white

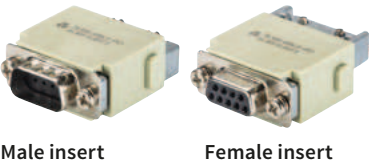
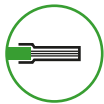
## DIMENSIONS

### Male insert



# REVOS MODULAR · MODULAR INSERTS

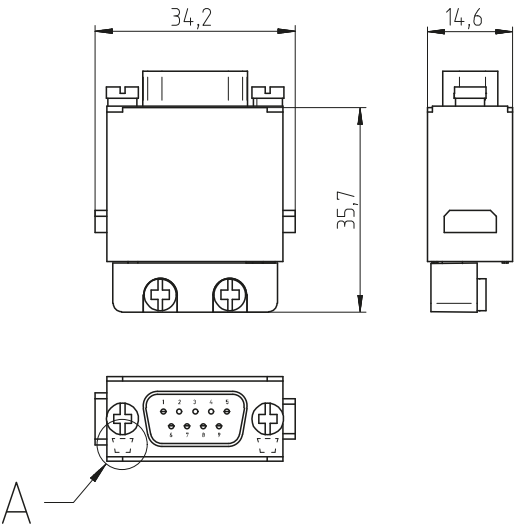
D-Sub, 9-pole, crimp connection



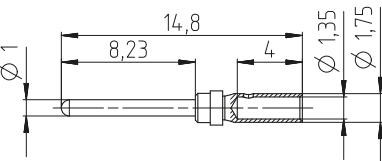
Description	Type	Part No.	P.U.
<b>Modular insert revos MODULAR</b>			
Male insert	MOD STC D-SUB 9	78.930.4056.0	10
Female insert	MOD BUC D-SUB 9	78.920.4056.0	10
<b>Contacts</b>			
	mm <sup>2</sup> / AWG, turned ø 1 mm		
Male insert, Ag	0.52 – 0.82 / 20 – 18	05.546.4300.8	100
Female insert, Ag	0.52 – 0.82 / 20 – 18	02.127.1500.8	100
Male insert, Au	0.52 – 0.82 / 20 – 18	05.546.4300.7	100
Female insert, Au	0.52 – 0.82 / 20 – 18	02.127.1500.7	100
<b>TECHNICAL DATA</b>			
Rated voltage	50 V		
Rated impulse voltage	0,8 kV		
Rated current	5 A		
Degree of pollution	3		
Insulation strip length	5 mm		
Contact resistance	≤ 3 mΩ		
Mating cycles	500		
Insulating material	Polycarbonate, halogen-free		
Flammability	UL 94 V-0		
Temperature range	-40 °C...+120 °C		
<b>ACCESSORIES</b>			
Crimping tool		95.101.2800.0	1
Extraction tool	revos MOD D-SUB	05.502.3000.0	1

## DIMENSIONS

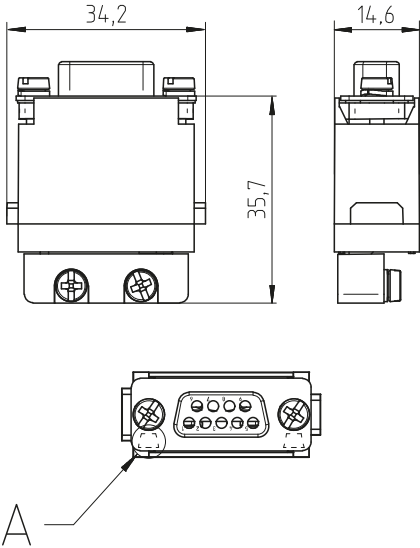
Male insert



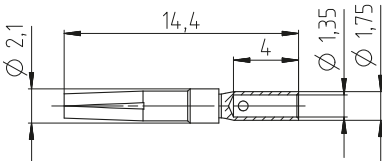
Male insert



Female insert



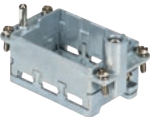
Female insert



# REVOS MODULAR · MODULE FRAME



2 slots



3 slots



4 slots

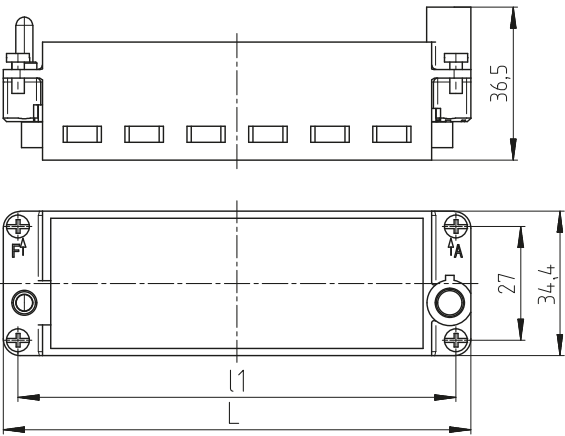


6 slots

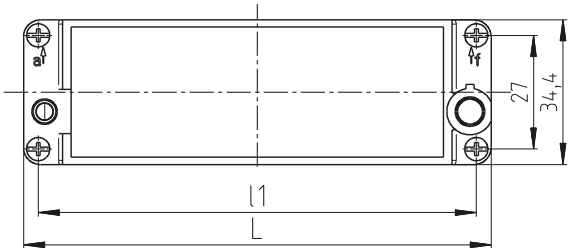
Description	Type	Part No.	P.U.
<b>Module frame revos MODULAR</b>	<b>2 slots, housing size 6H</b>		
Die-cast zinc			
For 2 modules, A - B	MOD MRG 6	78.210.4029.0	5
For 2 modules, a - b	MOD MRK 6	78.200.4029.0	5
<b>Module frame revos MODULAR</b>	<b>3 slots, housing size 10H</b>		
Die-cast zinc			
For 3 modules, A - C	MOD MRG 10	78.210.4129.0	5
For 3 modules, a - c	MOD MRK 10	78.200.4129.0	5
<b>Module frame revos MODULAR</b>	<b>4 slots, housing size 16H</b>		
Die-cast zinc			
For 4 modules, A - D	MOD MRG 16	78.210.4229.0	5
For 4 modules, a - d	MOD MRK 16	78.200.4229.0	5
<b>Module frame revos MODULAR</b>	<b>6 slots, housing size 24H</b>		
Die-cast zinc			
For 6 modules, A - F	MOD MRG 24	78.210.4329.0	5
For 6 modules, a - f	MOD MRK 24	78.200.4329.0	5
<b>TECHNICAL DATA</b>			
PE contact	max. 0.3 Ω		
Cross-section PE (power side)	4 - 10 mm <sup>2</sup> / AWG 12 - 8		
Cross-section PE (signal side)	1 - 2.5 mm <sup>2</sup> / AWG 18 - 14		
Module frame material	Die-cast zinc		
Mating cycles	500		
Temperature range	-40 °C...+120 °C		
Note	A complete connector must be provided with marking in uppercase and/or lowercase letters		

## DIMENSIONS

Sizes 6 - 24, A - F  
Sizes 6 - 24, a - f



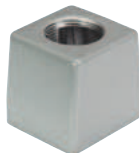
Type	L	L1
2 slots, housing size 6H	51	44
3 slots, housing size 10H	64	57
4 slots, housing size 16H	84.5	77.5
6 slots, housing size 24H	111	104



# REVOS MODULAR 2M · HOUSING



Upper shell holder  
without locking lever



Top cable entry



Base with locking lever

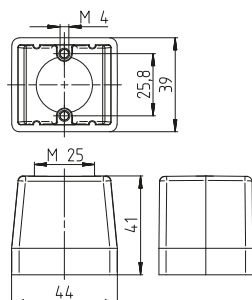


Wall duct

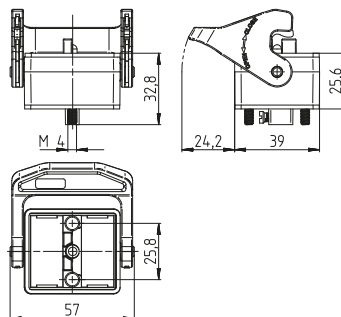
Description	Type	M	Part No.	P.U.	
Upper shell		Aluminum housing			
Upper shell holder (without locking lever)	RM2 MC 2M A		78.330.4235.0	5	
Top cable entry					
with threaded collar M25	RM2 TS 2M M25T A1	25	78.363.4235.1	5	
with threaded collar M32	RM2 TS 2M M32T A1	32	78.364.4235.1	5	
Base					
Base with locking lever	RM2 MC L 2M A		78.320.4235.0	5	
Wall duct + 3x Strain relief clamp 1 x 3-6 / 2 x 6-9.5	Zinc die-cast housing RM2 MP 2M Z		78.340.4236.0	5	
TECHNICAL DATA					
Material	aluminum				
Color	gray				
Locking levers	plastic material				
Seal for base	NBR				
Degree of protection					
with appropriate cable glands	IP65				
Temperature range	-40 °C...+120 °C				
ACCESSORIES		Type	M	Part No.	P.U.
Cable gland IP 68, plastic material gray		Connection range 7 – 16 mm	25	Z5.507.1553.0	10
Cable gland IP68, nickel-plated brass		Connection range 11 – 18 mm	25	Z5.507.1521.0	10
Cable gland IP 68, plastic material gray		Connection range 15 – 21 mm	32	Z5.507.1753.0	10
Cable gland IP68, nickel-plated brass		Connection range 15 – 21 mm	32	Z5.507.1721.0	10

## DIMENSIONS

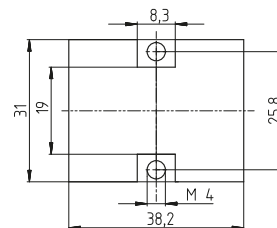
Upper shell



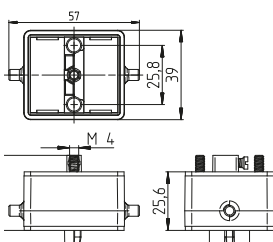
Base



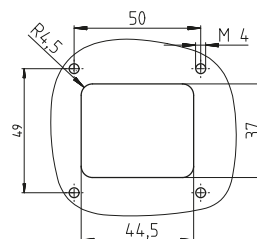
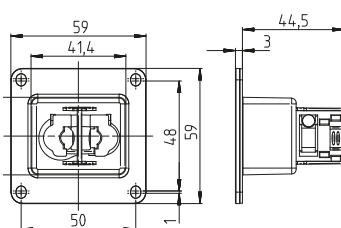
Drilling template



Upper shell holder



Wall duct



# AN **OVERVIEW** OF THE **RANGE** OF INDUSTRIAL CONNECTORS

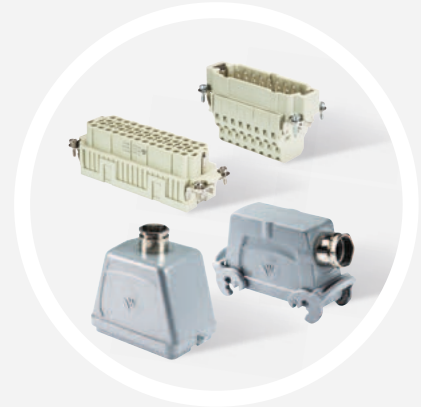
## GENERAL FEATURES:

- Salt and seawater resistant, UV resistant
- Single and double locking lever
- Screw, tension spring, crimp connection
- Housing in metal + plastic
- Contact inserts 2- to 216-pole
- Currents from 4 to 100 A
- Voltages up to 5.5 kV



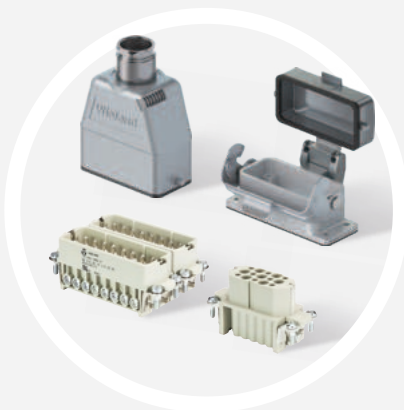
### revos MINI

The compact connector family from 3- to 12-pole and in two housing materials – plastic + die-cast zinc.



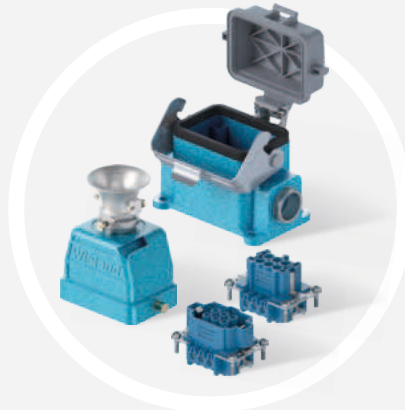
### revos BASIC

The proven connector family from 6- to 48-pole – with the largest product portfolio.



### revos HD

The high pole count connector family from 15 to 64-pole for currents up to 10 A in sizes 10/15 to 32/50.



### revos Ex

The connector family specifically for use in potentially explosive areas in deep mining.



### revos MOT

The plastic connector family – simple and easy handling due to unique fastener.

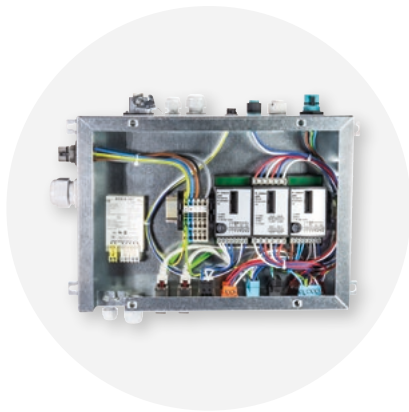
# INDIVIDUAL CUSTOMER SOLUTIONS

Do you require an individual solution tailored to your needs?  
Do you want to keep the assembly time and costs down by having optimized production processes? We pool our development and production know-how in cross-functional teams to provide individualized solutions and products..



- ▶ **Order picking as desired**
- ▶ **Pre-assembly services**
- ▶ **High production intensity**
- ▶ **More time for your core competencies**

**Get in touch with us. Our experienced experts will be happy to clarify all the details with you during an initial consultation.**



## DISTRIBUTION BOXES

Customer-specific cabling solutions.

- Customized and tailored to your needs
- Simple logistics – order the complete solution with just one item number
- Installation-ready with tested industrial quality



## CABLE SOLUTIONS

Products for special requirements, e.g. special contact fittings, complete cable assemblies, pre-assembled cable sets (lengths/connections)

- Perfectly integrated
- Quick and error-free assembly on-site
- Quick replacement of components during service and maintenance



## INFO TO GO

All brochures from Wieland Electric are available for download on our website.

<https://www.wieland-electric.com/en/support/downloads>

Interesting for you

<https://wie.li/industrialconnectors>



### REVOS CATALOG

Industrial multipole connectors for tough environments  
Part No. 0530.1



**Wieland on YouTube**  
See our solutions  
in motion

<https://www.youtube.com/user/WielandElectric>



**Technical consultation**  
Industry Solutions

Email: [industry@wieland-electric.com](mailto:industry@wieland-electric.com)

Worldwide: <https://wie.li/contactinternational>



## ONLY ONE TAP AWAY

**Our Wieland E-Shop**  
Over 25,000 products - anytime

In our online store you will find  
all the information about our products,  
prices, and technical data.

Order easily and conveniently online,  
and check availability.

<https://eshop.wieland-electric.com>



Scan QR code –  
view products in the  
E-SHOP.





# wieland

## HEADQUARTERS

Wieland Electric GmbH  
Brennerstrasse 10 – 14  
96052 Bamberg · Germany

---

Phone +49 951 9324-0  
Fax +49 951 9324-198  
info@wieland-electric.com

0546.1 S 08/21

Represented in over 70 countries worldwide:

**www.wieland-electric.com**