

WIELAND ELECTRIC

# ALL AT A GLANCE

Solutions + Products Overview

# ABOUT WIELAND ELECTRIC

---

**Tradition and innovation - Wieland is representing the synergy of these two guiding principles for more than 100 years.**

At Wieland Electric, we are proud to be the world market leader in electrical connections, with safe and innovative technologies. Our journey to success traces back to the legendary Wieland Clamp, the first-ever safe electrical connector. Since then, safety has remained at the core of our ethos, propelling us to continuously develop safer and more efficient ways to electrify the world.

As a company that has evolved from a component-only manufacturer, we have emerged as one of the leading suppliers of innovative, forward-looking, and complete electrical solutions. We divide our focus into two primary areas: Building and Industry. Our Building Solutions focus on decentralized power distribution and pluggable connections suitable for diverse architectures and infrastructures. From illuminating in-store displays, hospitals, and airports to any structure in-between, our solutions seamlessly integrate into any structure – **you build it, we power it!** Our Industry Solutions center around functional safety for machines, control panel technology, industrial networking, and power distribution.



**1910**

Founded  
in Bamberg



**1700+**

Employees  
worldwide



**3**

Production  
sites

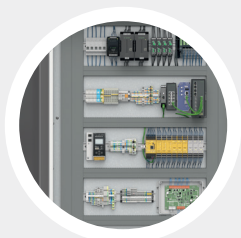


**70+**

Countries  
worldwide

## OUR SOLUTIONS RANGE

---



Control panel  
technology + DIN rail  
terminal blocks



Energy  
distribution  
technology



Process +  
communication  
technology



Safety controls +  
software + training  
+ solutions

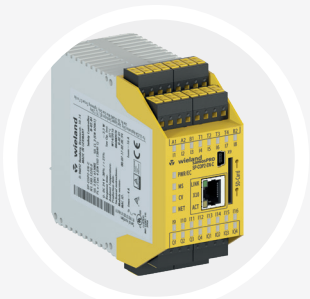


Connectors/  
connection and  
plug-in electrical  
technology

# SAFETY CONTROLLERS + SOFTWARE

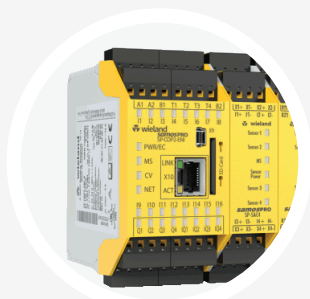


## SAMOS® PRO COMPACT PROGRAMMABLE SAFETY CONTROLLERS



- + 20 safe I/O base with digital & analog expansion
- + Up to 116 safe inputs and 56 safe outputs
- + Supports Modbus TCP, Profinet I/O, Ethernet I/P, CANopen, and EtherCAT
- + Up to category 4, PLe, SIL3

## SAMOS® PRO MOTION MONITORING SAFETY CONTROLLERS



- + 4 fast safe motion inputs up to 70KHz
- + 6 TÜV certified motion functions integrated
- + Up to category 4, PLe, SIL3
- + Motion integrated in the base module for safe standstill, speed, direction, and position monitoring

## SAMOS® PLAN6 PROGRAMMING SOFTWARE



Free  
Download

- + License-Free intuitive software
- + Automatic hardware configuration
- + Error-free commissioning through integrated simulation and logic analysis
- + Comprehensive library with TÜV-certified function blocks

# SAFE SIGNAL ACQUISITION + MONITORING



## SAFE RELAY **UNIVERSAL** SAFETY RELAYS



- + Basic, timer, expansion, standstill and two hand control relays pluggable screw and push-in terminals
- + 115/230VAC & 24VDC supply
- + 115/230VAC & 24VDC output @ 5, 8A
- + Up to category 4, PLe, SIL3

## SENSOR PRO **SAFETY** INTERLOCKING DEVICES



- + Limit switches
- + RFID & magnetic switches
- + Interlocking safety switches with optional guard locking and emergency escape release
- + Safety encoders

## SENSOR PRO **SAFETY** SENSORS

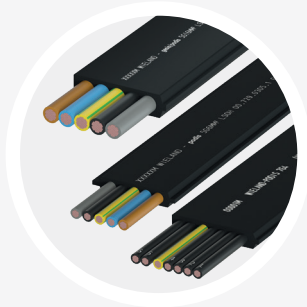


- + Safety light curtains
- + Safety light grids
- + Emergency stop buttons

# POWER BUS SYSTEMS



## PODIS® TRAY CABLE



- + 5G16 flat TC-ER cable: 5 cores, 60A, 6AWG
- + 5G6 flat TC-ER cable: 5 cores, 32A, 10AWG
- + 7G4 flat TC-ER cable: 7 cores, 25A, 12AWG

## PODIS® TAP OFF MODULES



- + 5G16 tap-off module: 41A, 600V
- + 5G6 tap-off module: 32A, 600V
- + 7G4 tap-off module: 20A, 600V

## PODIS® FEED-IN MODULES



- + For the transition of round cable/pipe to flat TC-ER cable
- + 25-65A, 600V

## PODIS® LED LIGHTING

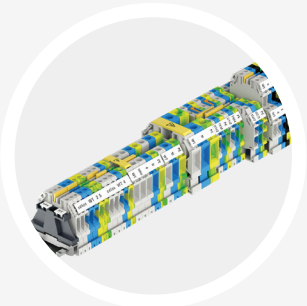


- + Reliable industrial lighting for harsh environments
- + Pluggable (up to IP69 and Type 4X/6P)
- + Dry/damp/wet rated
- + Optional magnetic mounts
- + 24-120VDC or 120-240VAC

# DIN RAIL TERMINAL BLOCKS + WIRING DUCTS



## SELOS® SCREW TERMINAL



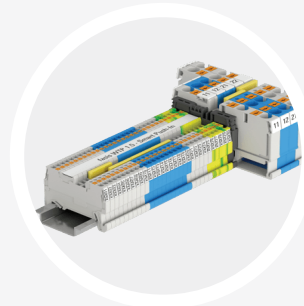
- + Multi-wire connection
- + Maintenance free
- + Rugged clamping body design
- + One-piece threaded collar
- + Screw terminals up to 335A, 600V, 350MCM
- + Ring lug terminals up to 510A, 1000V and 600MCM
- + Hazloc Certified, UL, CSA, ATEX, IECEx

## FASIS® SPRING TERMINAL



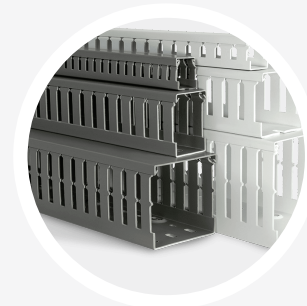
- + Resistant to vibration
- + Simple operation with a standard screwdriver
- + Up to 115A, 600V, 2AWG
- + Hazloc Certified, UL, CSA, ATEX, IECEx

## FASIS® WTP PUSH-IN TERMINAL



- + Tool-free connection
- + Low push-in force
- + Integrated release lever
- + Up to 41A, 600V, 8AWG

## WIRING DUCTS + ORGANIZERS



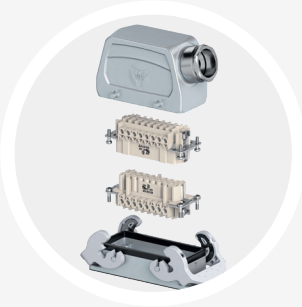
- + Grey and white
- + 2m lengths
- + Cover included with base
- + Halogen free high temperature variants
- + Door mount designs available
- + Adhesive backed variants

**Custom DIN Rail Terminal Blocks Assembly Service Available.**

# INDUSTRIAL CONNECTORS



## REVOS BASIC CONNECTORS



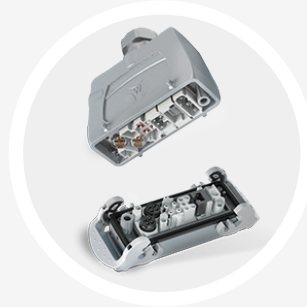
- + Ideal for the harshest environmental conditions
- + Up to 600V, 16A, 12AWG
- + 6 to 48 poles
- + Screw, push-in, spring, or crimp connection
- + Up to Type 4, IP65 environmental protection
- + PVVA for UL508A panel feeder application

## REVOS MINI CONNECTORS



- + Ideal for tight spaces
- + Up to 600V, 16A, 12AWG
- + 3 to 12 poles or RJ45
- + Screw & crimp connection
- + Metal and plastic enclosures
- + Type 1, IP65
- + IP69K option available

## REVOS MODULAR + FLEX CONNECTIONS



- + Customizable connectors for your specific application
- + Combine communication, power, signal, pneumatics, & fiber optic lines
- + Up to 600V, 120A, 26 to 2AWG
- + 2 to 280 Poles
- + Screw, axial, spring, & crimp connection

## ENDLESS POSSIBILITIES WITH REVOS



- Other variants available:
- + Power (82A) and signal
  - + Higher contact density
  - + Late make/early break contacts
  - + Type 4X rating
  - + Screw locking features
  - + Rear entry bases (insert from inside the cabinet)
  - + Plastic housings
  - + Data cable feed-through

# INDOOR + WATERPROOF CONNECTORS



## GST® PLUGGABLE INDOOR CONNECTOR



- + 2 to 5 poles, up to 600V, 20A
- + Suitable for NM cable or flexible cables
- + Screw and spring terminals
- + Multiple colors & keying
- + Accessories: splitters, panel mount (bulkhead) connectors

## RST® MICRO + MINI PLUGGABLE CONNECTOR



- + Up to 600V, 16A, 14AWG
- + Up to type 4X/6P and IP69
- + Available in 2 to 5 pins
- + Optional internal contact seals
- + Multiple colors & keying
- + From 14.9mm diameter
- + Accessories: splitters, panel mount (bulkhead) connectors
- + Push-lock connectors

## RST® POWER PLUG & PLAY CONNECTOR



- + Up to 600V, 53A, 6AWG
- + Type 4X/6P, and IP69
- + 4 or 5 pin
- + Bulkhead version available
- + Robust locking mechanism
- + For round flexible cables
- + Compact footprint

## RST® CLASSIC PLUGGABLE CONNECTOR



- + Up to 600V, 20A
- + 2 to 7 pin varieties
- + 6 & 7 pin variety can include internal contact seals
- + Bulkhead version available
- + Screw, crimp, & push-in terminals
- + Type 4X/6P and IP69
- + Multiple colors & keying
- + Accessories: Splitters, panel mount (bulkhead) connectors



# INDUSTRIAL COMMUNICATION + CONTROL



## WIPOS POWER SUPPLIES + UPS



- + 1 & 3 phase AC or DC Input
- + 5, 12, 24, 48 VDC output
- + 0.42A to 40A output
- + Redundancy module
- + UPS modules for lead, Li-Ion, Ni-MH, and supercaps

## WIENET MANAGED + UNMANAGED SWITCHES



- + PoE variants
- + 24VDC PoE power boost
- + RJ45 fast & gigabit Ethernet
- + Fiber optic ports
- + -40 °C...+75 °C
- + IP30 protection
- + IP67 switch available
- + Profinet & Ethernet/IP accessible switches
- + Redundant Power Supply

## HMI ECO TOUCH HMI



- + 6 PLC links
- + Profinet, Ethernet/IP, Modbus/TCP
- + 4", 7", 10", 12" & 15" inch
- + Front face is customizable with your logo
- + Seamless data exchange between the HMI PLAN software and the samos® PLAN 6 planning software

## FLARE RELAY + CONTROLS

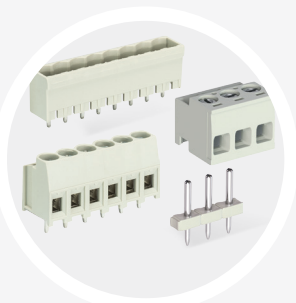


- + Electro-mechanical
- + Solid state
- + Timing relays
- + Signal conditioners
- + Class 1 Div. 2, Group A,B,C,D
- 24 VDC relays
- Non-incendive barriers (analog & discrete)

# PCB TERMINALS + CONNECTORS

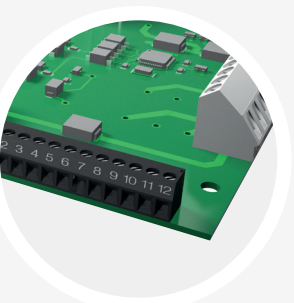


## WIECON® PLUGGABLE PCB TERMINALS



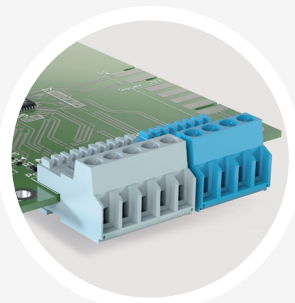
- + Standard + THR variants
- + Up to 300V, 15A, 12AWG
- + Screw, spring or push-in connection
- + Pitch 2.50 mm to 7.62 mm
- + Custom printing available
- + Enclosed or pin-strip headers
- + Tray, tape & reel and magazine tube packaging available

## WIECON FIXED PCB TERMINALS



- + Standard + THR variants
- + Up to 600V, 65A, 8AWG
- + Screw, spring or push-in connection
- + Pitch 3.50 mm to 10.16 mm
- + Custom printing available
- + Tray, tape & reel and magazine tube packaging available

## WIECON EDGE CONNECTORS

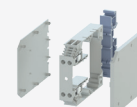


- + Solder-free assembly
- + No header required
- + Less components required
- + Up to 300V, 6A, 14AWG
- + Clamping yoke connection for easy reconnection
- + Pitch 3.50 mm and 5.00 mm

## EUROPA STRIPS



- + Divisible + economical
- + Mountable on flat surfaces
- + Wire protection guard
- + Up to 600V, 75A, 4AWG
- + Jumpers and marking accessories available

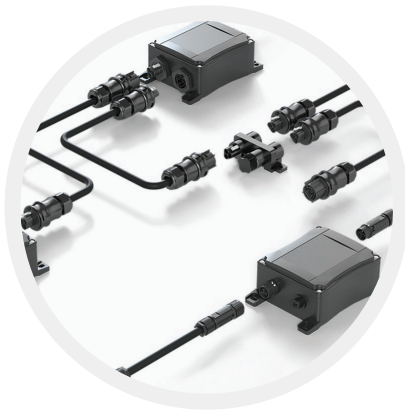


Ask about our DIN rail mount PCB housings.

# CUSTOMIZED SOLUTIONS + SERVICES

---

We are your experts for customized solutions in the machine building and plant engineering sectors.



## Integrated Solutions

---

**Simplify ordering, reduce part count, gain predictability in cost & time, and improve productivity with a custom solution tailored for your application**

- + Installation concepts; we will develop complete installation solutions based on application requirements
- + Quick quotation and prototyping
- + Kitting, custom labeling, and custom printed PCB terminals
- + Cable assemblies, junction boxes, and custom rail assemblies



## Safety Services + Trainings

---

**Certification, training and verification & validations support for fully compliant systems**

- + CESE course with globally recognized SGS TÜV-Saar certification
- + Machine safety seminars on the latest laws and regulations
- + Risk assessment services on all relevant aspects of machine safety:
- + On-site advice; with a machine inspection we can check whether it conforms to current standards
- + Safety-technical assessment; we will help you identify and mitigate dangers
- + Application creation and engineering from A to Z
- + Security; security concepts for secure data in your machines



# wieland

## GLOBAL HEADQUARTERS

Wieland Electric GmbH  
Brennerstraße 10 – 14  
96052 Bamberg · Germany

---

Tel +49 951 9324-0  
Fax +49 951 9324-198  
[info@wieland-electric.com](mailto:info@wieland-electric.com)

## NORTH AMERICA

Wieland Electric Inc.

---

Toll Free 1 800 WIELAND (943-5263)  
[technical.support@wieland-electric.com](mailto:technical.support@wieland-electric.com)

### United States

Tel +1 314 735 0038  
Fax +1 314 405 9363

### Canada

Tel +1 905 829 8414  
Fax +1 905 829 8413



Represented in over 70 countries worldwide  
**[www.wieland-americas.com](http://www.wieland-americas.com)**

34.205.0174.0 09/24