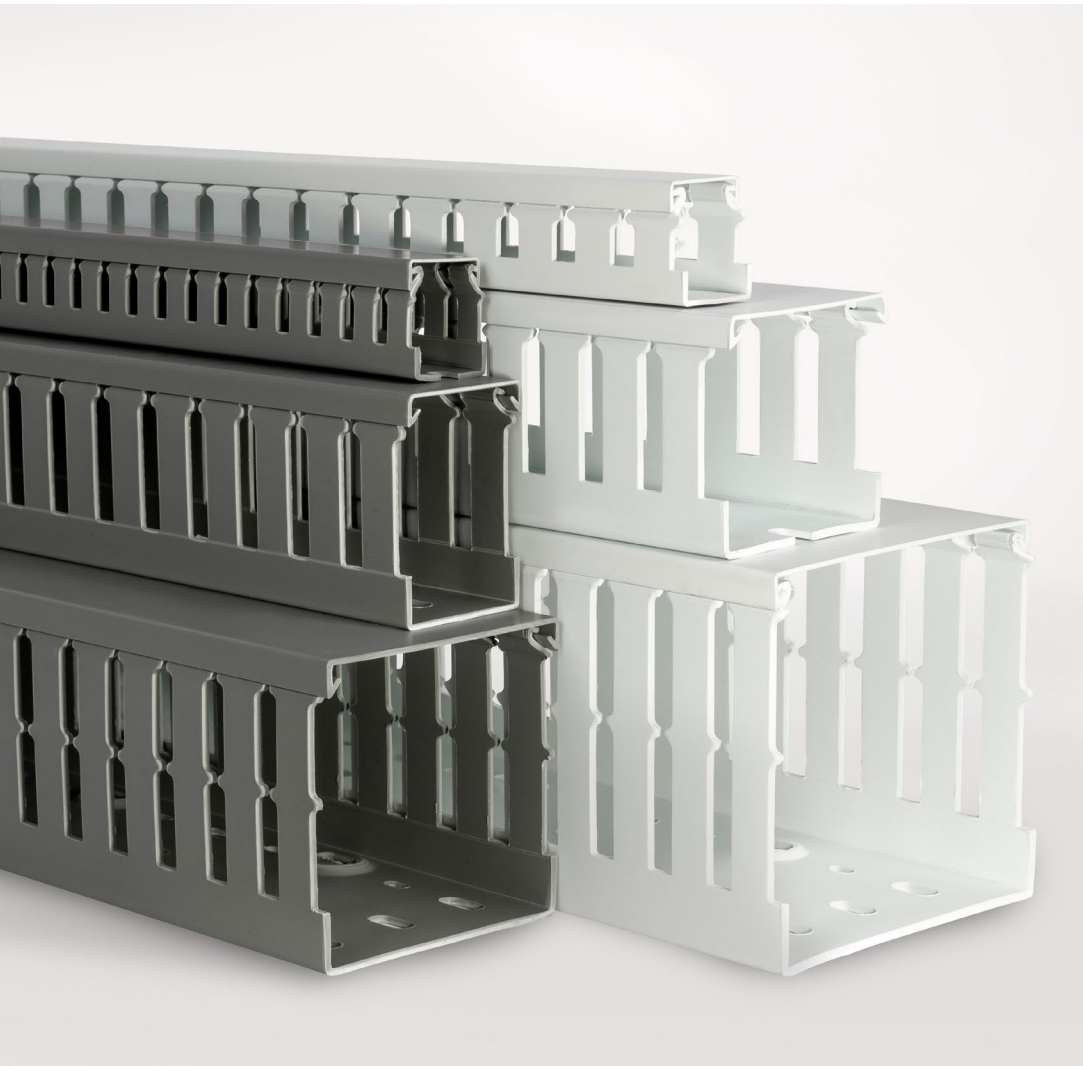




**wieland**



**IBOCO** WIRING DUCTS

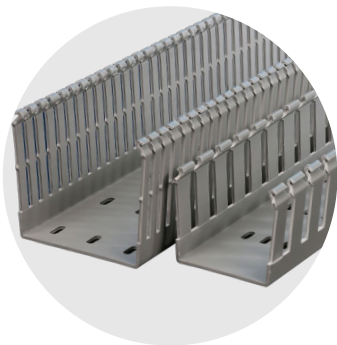
# **WIRE ORGANIZATION**

Flexible, durable and safe PVC wiring ducts

# SAFE **WIRE INSTALLATION** FOR STANDARD + CUSTOM APPLICATIONS

Simplify and accelerate panel building operations with the largest inventory of wire duct products from Wieland.

Wieland Electric is proud to carry the largest inventory of **IBOCO Wiring Ducts** and components in Canada. These wiring duct systems feature multiple styles of wire ducts with up to 27 duct sizes, and over 40 components and accessories. This combination allows for the simplification and acceleration of panel building operations such as wire retention, identification of equipment/circuits, circuit/wire separation, and the direct mounting of duct and equipment on DIN rails.



## **NAB DUCTS**

Available in standard and narrow finger densities, NAB ducts reflect the mounting hole configuration of all North American branded wire ducts, for immediate mounting to your panel or enclosure.



## **T1 DUCTS**

Available in standard and narrow finger (T1-E), as well as blue and black color, wire ducts are the safer alternative to cable ties in electrical enclosures, machines, and control panels.



## **T1 ACCESSORIES**

Covers, cable attachments, wire retainers, separators, identification tags, wiring duct rivets, and rivet tools are all available to make wire installation faster and safer.



## **YOUR BENEFITS**

- + Customizable: length, fingers, hole patterns, and adhesive backing!
- + Expandable and retrofittable
- + Cost, resource, and time-efficient
- + Reusable

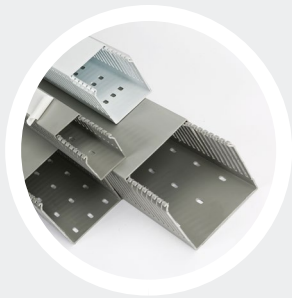
## **FEATURES**

- + Lids for NAB ducts include a protective, removable film, on sizes 1.5" and above, that is easily removable after lid installation
- + Restricted slot opening retains wire better
- + Two pre-determined break lines for easily removing finger or finger bases
- + Burr-free edges won't damage wires
- + Recessed mounting holes for fast component mounting

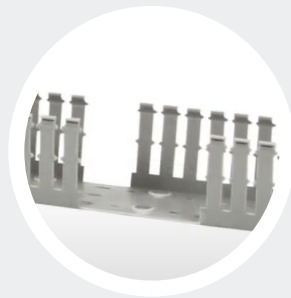
## CUSTOM OPTIONS

Save time, reduce scrap, eliminate injuries, and provide quality assurance with custom wire ducts that fit your specific needs.

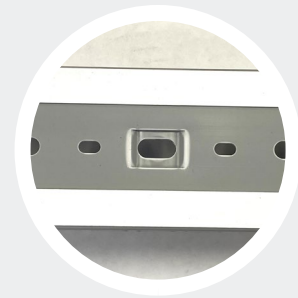
All IBOCO and Hager wire duct orders of **10 to 10,000 pieces** can be customized for length, fingers, hole patterns, and even outfitted with adhesive backing. Contact us today and your custom wire duct can be ready in less than 2 weeks!



LENGTH



FINGERS



ADHESIVE BACKING

Contact us for details!

1 800 WIELAND or [technical.support@wieland-electric.com](mailto:technical.support@wieland-electric.com)

## CONTENTS

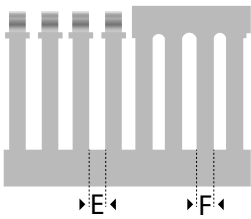
NAB Ducts	p 4
T1/ T1E Ducts	p 5
Accessories	p 6
Duct Cutters	p 9
Duct Dimensions	p 10



## NAB STANDARD FINGER

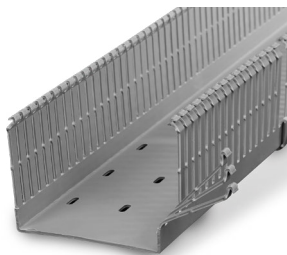
Available in:

- + Grey (.0)
- + White (.1)



PART NUMBER Wieland / Iboco	NOMINAL SIZE W x H (inch / mm)	DIMENSIONS IN INCHES (Actual)				STANDARD CARTON Quantity
		W	H	E*	F*	
34.296.0506.X / NAB-0506X 34.296.0510.X / NAB-0510X 34.296.0522.X / NAB-0522X	½" x ⅝" / 15 x 18 ½" x 1" / 15 x 30 ½" x 2¼" / 15 x 60	0.60	0.71	0.20	0.30	36 20 16
34.296.1010.X / NAB-1010X 34.296.1015.X / NAB-1015X 34.296.1022.X / NAB-1022X 34.296.1030.X / NAB-1030X 34.296.1040.X / NAB-1040X	1" x 1" / 25 x 30 1" x 1½" / 25 x 40 1" x 2¼" / 25 x 60 1" x 3" / 25 x 80 1" x 4" / 25 x 100	1.00	1.18	0.20	0.30	20 18 24 24 8
34.296.1515.X / NAB-1515X 34.296.1522.X / NAB-1522X 34.296.1530.X / NAB-1530X 34.296.1540.X / NAB-1540X	1½" x 1½" / 40 x 40 1½" x 2¼" / 40 x 60 1½" x 3" / 40 x 80 1½" x 4" / 40 x 100	1.57	1.57	0.31	0.47	20 18 16 8
34.296.2215.X / NAB-2215X 34.296.2222.X / NAB-2222X 34.296.2230.X / NAB-2230X 34.296.2240.X / NAB-2240X	2¼" x 1½" / 60 x 40 2¼" x 2¼" / 60 x 60 2¼" x 3" / 60 x 80 2¼" x 4" / 60 x 100	2.36	1.57	0.31	0.47	12 12 12 4
34.296.3015.X / NAB-3015X 34.296.3022.X / NAB-3022X 34.296.3030.X / NAB-3030X 34.296.3040.X / NAB-3040X 34.296.3050.X / NAB-3050X	3" x 1½" / 80 x 40 3" x 2¼" / 80 x 60 3" x 3" / 80 x 80 3" x 4" / 80 x 100 3" x 5" / 75 x 125	3.15	1.57	0.31	0.47	12 12 12 4 6
34.296.4015.X / NAB-4015X 34.296.4022.X / NAB-4022X 34.296.4030.X / NAB-4030X 34.296.4040.X / NAB-4040X 34.296.4050.X / NAB-4050X	4" x 1½" / 100 x 40 4" x 2¼" / 100 x 60 4" x 3" / 100 x 80 4" x 4" / 100 x 100 4" x 5" / 100 x 125	3.94	1.57	0.31	0.47	8 8 8 4 4
34.296.6040.X / NAB-6040X	6" x 4" / 150 x 100	5.91	3.94	0.31	0.47	4

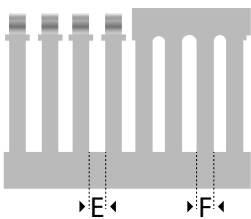
Part No. Example: 34.296.0510.**0** (Grey) or 34.296.0510.**1** (White)



## NARROW FINGER (HIGH DENSITY/HD)

Available in:

- + White HD (.2)
- + Grey HD (.3)



PART NUMBER Wieland / Iboco	NOMINAL SIZE W x H (inch / mm)	DIMENSIONS IN INCHES (Actual)				STANDARD CARTON Quantity
		W	H	E*	F*	
34.296.0506.X / NAB-0506XHD 34.296.0510.X / NAB-0510XHD 34.296.0522.X / NAB-0522XHD	½" x ⅝" / 15 x 18 ½" x 1" / 15 x 30 ½" x 2¼" / 15 x 60	0.60	0.71	0.16	0.24	36 20 16
34.296.1010.X / NAB-1010XHD 34.296.1015.X / NAB-1015XHD 34.296.1022.X / NAB-1022XHD 34.296.1030.X / NAB-1030XHD 34.296.1040.X / NAB-1040XHD	1" x 1" / 25 x 30 1" x 1½" / 25 x 40 1" x 2¼" / 25 x 60 1" x 3" / 25 x 80 1" x 4" / 25 x 100	1.00	1.18	0.16	0.24	20 18 24 24 8
34.296.1515.X / NAB-1515XHD 34.296.1522.X / NAB-1522XHD 34.296.1530.X / NAB-1530XHD 34.296.1540.X / NAB-1540XHD	1½" x 1½" / 40 x 40 1½" x 2¼" / 40 x 60 1½" x 3" / 40 x 80 1½" x 4" / 40 x 100	1.57	1.57	0.16	0.24	20 18 16 8
34.296.2215.X / NAB-2215XHD 34.296.2222.X / NAB-2222XHD 34.296.2230.X / NAB-2230XHD 34.296.2240.X / NAB-2240XHD	2¼" x 1½" / 60 x 40 2¼" x 2¼" / 60 x 60 2¼" x 3" / 60 x 80 2¼" x 4" / 60 x 100	2.36	1.57	0.16	0.24	12 12 12 4
34.296.3015.X / NAB-3015XHD 34.296.3022.X / NAB-3022XHD 34.296.3030.X / NAB-3030XHD 34.296.3040.X / NAB-3040XHD 34.296.3050.X / NAB-3050XHD	3" x 1½" / 80 x 40 3" x 2¼" / 80 x 60 3" x 3" / 80 x 80 3" x 4" / 80 x 100 3" x 5" / 75 x 125	3.15	1.57	0.16	0.24	12 12 12 4 6
34.296.4015.X / NAB-4015XHD 34.296.4022.X / NAB-4022XHD 34.296.4030.X / NAB-4030XHD 34.296.4040.X / NAB-4040XHD 34.296.4050.X / NAB-4050XHD	4" x 1½" / 100 x 40 4" x 2¼" / 100 x 60 4" x 3" / 100 x 80 4" x 4" / 100 x 100 4" x 5" / 100 x 125	3.94	1.57	0.16	0.24	8 8 8 4 4
34.296.6040.X / NAB-6040XHD	6" x 4" / 150 x 100	5.91	3.94	0.16	0.24	4

Part No. Example: 34.296.0510.**3** (Grey HD) or 34.296.0510.**2** (White HD)

\*Each standard length is 6'6 3/4", but is counted as 6 feet for packaging and pricing. Contact for custom lengths.

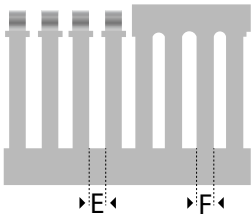
\*\*NAB ducts come complete with lid on size 1.5" and above. Additional lids can be sold separately.



## T1 STANDARD FINGER

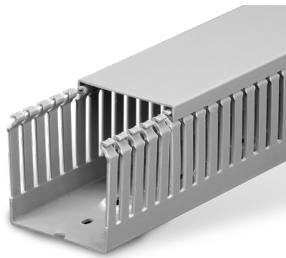
Available in:

- + Grey (.0)
- + White (.1)



PART NUMBER Wieland / Iboco	NOMINAL SIZE W x H (inch / mm)	DIMENSIONS IN INCHES (Actual)				STANDARD CARTON Quantity
		W	H	E*	F*	
34.293.0506.0 / T1-0506G 34.293.0510.0 / T1-0510G 34.293.0522.0 / T1-0522G	½" x ⅝" / 15 x 18 ½" x 1" / 15 x 30 ½" x 2¼" / 15 x 60	0.60	0.71	0.20	0.30	20 20 16
34.293.1010.X / T1-1010X 34.293.1015.X / T1-1015X 34.293.1022.X / T1-1022X 34.293.1030.X / T1-1030X 34.293.1040.X / T1-1040X	1" x 1" / 25 x 30 1" x 1½" / 25 x 40 1" x 2¼" / 25 x 60 1" x 3" / 25 x 80 1" x 4" / 25 x 100	1.00	1.18	0.20	0.30	18 18 24 24 8
34.293.1515.X / T1-1515X 34.293.1522.X / T1-1522X 34.293.1530.X / T1-1530X 34.293.1540.X / T1-1540X	1½" x 1½" / 40 x 40 1½" x 2¼" / 40 x 60 1½" x 3" / 40 x 80 1½" x 4" / 40 x 100	1.57	1.57	0.31	0.47	20 18 16 8
34.293.2215.0 / T1-2215G 34.293.2222.X / T1-2222X 34.293.2230.X / T1-2230X 34.293.2240.X / T1-2240X	2¼" x 1½" / 60 x 40 2¼" x 2¼" / 60 x 60 2¼" x 3" / 60 x 80 2¼" x 4" / 60 x 100	2.36	1.57	0.31	0.47	12 12 12 4
34.293.3015.0 / T1-3015G 34.293.3022.X / T1-3022X 34.293.3030.X / T1-3030X 34.293.3040.X / T1-3040X 34.293.3050.X / T1-3050X	3" x 1½" / 80 x 40 3" x 2¼" / 80 x 60 3" x 3" / 80 x 80 3" x 4" / 80 x 100 3" x 5" / 75 x 125	3.15	1.57	0.31	0.47	12 12 12 4 6
34.293.4015.0 / T1-4015G 34.293.4022.0 / T1-4022G 34.293.4030.X / T1-4030X 34.293.4040.X / T1-4040X 34.293.4050.X / T1-4050X	4" x 1½" / 100 x 40 4" x 2¼" / 100 x 60 4" x 3" / 100 x 80 4" x 4" / 100 x 100 4" x 5" / 100 x 125	3.94	1.57	0.31	0.47	8 8 8 4 4
34.293.6040.X / T1-6040X	6" x 4" / 150 x 100	5.91	3.94	0.31	0.47	4

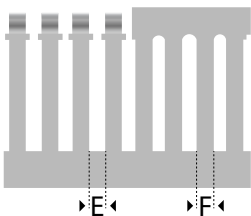
Part No. Example: 34.296.0510.0 (Grey) or 34.296.0510.1 (White)



## T1-E NARROW FINGER (HD)

Available in:

- + White HD (.2)
- + Grey HD (.3)



PART NUMBER Wieland / Iboco	NOMINAL SIZE W x H (inch / mm)	DIMENSIONS IN INCHES (Actual)				STANDARD CARTON Quantity
		W	H	E*	F*	
34.293.1015.X / T1E-1015X 34.293.1022.X / T1E-1022X 34.293.1030.X / T1E-1030X 34.293.1040.X / T1E-1040X	1" x 1½" / 25 x 40 1" x 2¼" / 25 x 60 1" x 3" / 25 x 80 1" x 4" / 25 x 100	1.00	1.57	0.16	0.24	18 24 24 8
34.293.1515.X / T1E-1515X 34.293.1522.X / T1E-1522X 34.293.1530.X / T1E-1530X 34.293.1540.X / T1E-1540X	1½" x 1½" / 40 x 40 1½" x 2¼" / 40 x 60 1½" x 3" / 40 x 80 1½" x 4" / 40 x 100	1.57	1.57	0.16	0.24	20 18 16 8
34.293.2215.3 / T1E-2215G 34.293.2222.X / T1E-2222X 34.293.2230.X / T1E-2230X 34.293.2240.X / T1E-2240X	2¼" x 1½" / 60 x 40 2¼" x 2¼" / 60 x 60 2¼" x 3" / 60 x 80 2¼" x 4" / 60 x 100	2.36	1.57	0.16	0.24	12 12 12 4
34.293.3015.3 / T1E-3015G 34.293.3022.X / T1E-3022X 34.293.3030.X / T1E-3030X 34.293.3040.X / T1E-3040X	3" x 1½" / 80 x 40 3" x 2¼" / 80 x 60 3" x 3" / 80 x 80 3" x 4" / 80 x 100	3.15	1.57	0.16	0.24	12 12 12 4
34.293.4015.3 / T1E-4015G 34.293.4022.3 / T1E-4022G 34.293.4030.X / T1E-4030X 34.293.4040.X / T1E-4040X	4" x 1½" / 100 x 40 4" x 2¼" / 100 x 60 4" x 3" / 100 x 80 4" x 4" / 100 x 100	3.94	1.57	0.16	0.24	8 8 8 4

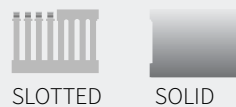
Part No. Example: 34.296.0510.3 (Grey HD) or 34.296.0510.2 (White HD)

### T1 DUCTS ARE AVAILABLE IN:

COLORS



TYPE



Contact us for details!

# GET ORGANIZED

Accessories that make installation easier, faster, and safer.

Covers, cable attachments, wire retainers, separators, identification tags, wiring duct rivets, and rivet tools make wire installation a breeze.

## 1 Wire Retainer

Keeps wires in during installation, provides additional strain relief for the duct fingers, and eliminates bulging of the sidewall.

## 3 Mounting Inserts

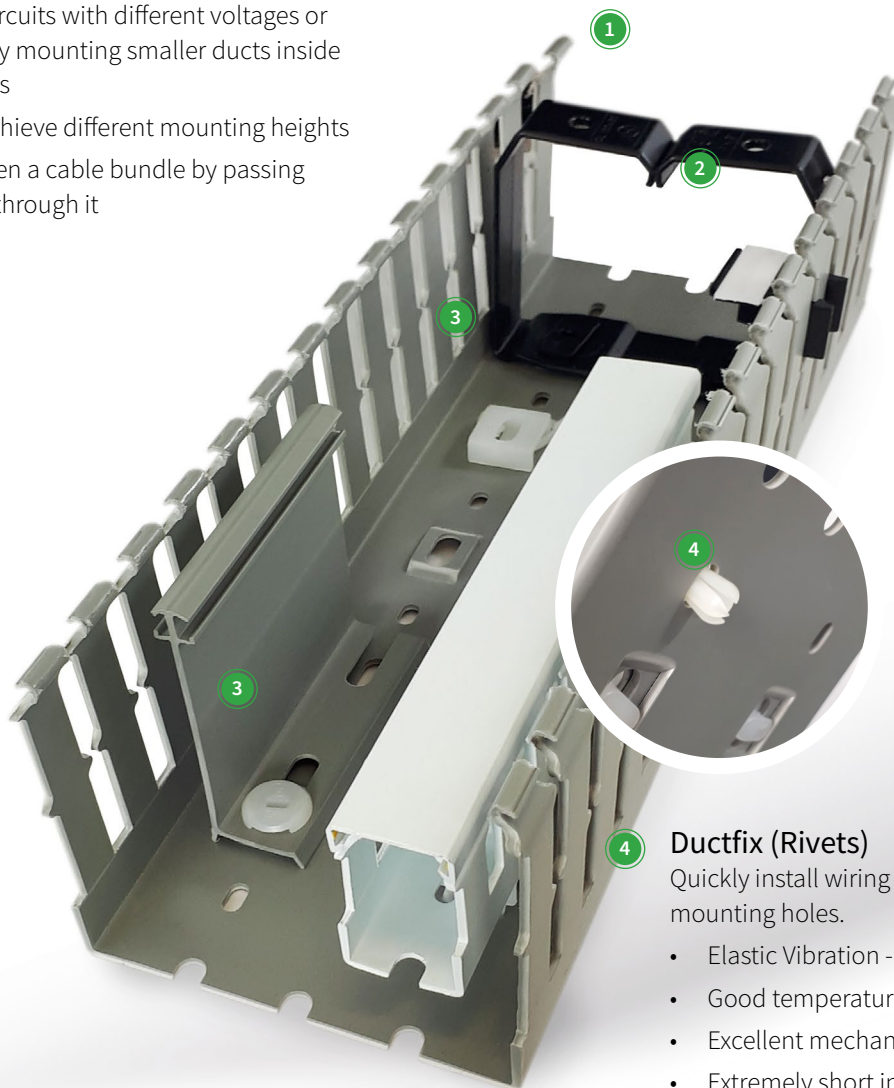
Mount components and separators inside the duct with a simple quarter turn!

- Separate circuits with different voltages or functions by mounting smaller ducts inside bigger ducts
- Stack to achieve different mounting heights
- Easily tighten a cable bundle by passing a cable tie through it

## 2 Ductmark (Identification Tag)

Snaps onto the sidewall of the T1 and NAB duct series to identify wire/circuits inside of the wire duct

- Permanent installation
- Magnified slide for increased visibility
- Stays on during maintenance or removal of cover



## 4 Ductfix (Rivets)

Quickly install wiring ducts with standard mounting holes.

- Elastic Vibration - dampening head
- Good temperature resistance
- Excellent mechanic properties
- Extremely short installation time
- Insulating - Functional - Easy To Apply
- Hole size R4 - 5/32" (4 mm) – R6 - 7/32" (5.5 mm)



## DUCT LIDS

Available in:

- + Grey (.0)
- + White (.1)

### NAB LIDS

PART NUMBER Wieland / Iboco	NOMINAL WIDTH (inch / mm)	STANDARD CARTON Quantity
34.296.0000.X / LID-05X	½" / 15mm	50
34.296.0001.X / LID-10X	1" / 25mm	25
34.296.0002.X / LID-15X	1½" / 40mm	25
34.296.0003.X / LID-22X	2¼" / 60mm	25
34.296.0004.X / LID-30X	3" / 80mm	25
34.296.0005.X / LID-40X	4" / 100mm	20
34.296.0006.X / LID-60X	6" / 150mm	20

### T1/T1E LIDS

PART NUMBER Wieland / Iboco	NOMINAL WIDTH (inch / mm)	STANDARD CARTON Quantity
34.293.0000.X / COV-05X	½" / 15mm	25
34.293.0001.X / COV-10X	1" / 25mm	25
34.293.0002.X / COV-15X	1½" / 40mm	25
34.293.0003.X / COV-22X	2¼" / 60mm	25
34.293.0004.X / COV-30X	3" / 80mm	25
34.293.0005.X / COV-40X	4" / 100mm	25
34.293.0006.X / COV-60X	6" / 150mm	25



## WIRE RETAINERS

(for T1/ T1E only)

PART NUMBER Wieland / Iboco	NOMINAL SIZE (inch / mm)	STANDARD CARTON Quantity
34.293.0009.0 / CL-1515	1½" x 1½" / 40 x 40mm	40
34.293.0010.0 / CL-1522	1½" x 2¼" / 40 x 60mm	40
34.293.0011.0 / CL-1530	1½" x 3" / 40 x 80mm	20
34.293.0012.0 / CL-2215	2¼" x 1½" / 60 x 40mm	40
34.293.0013.0 / CL-2222	2¼" x 2¼" / 60 x 60mm	20
34.293.0014.0 / CL-2230	2¼" x 3" / 60 x 80mm	20
34.293.0015.0 / CL-2240	2¼" x 4" / 60 x 100mm	20
34.293.0016.0 / CL-3022	3" x 2¼" / 80 x 60mm	10
34.293.0017.0 / CL-3030	3" x 3" / 80 x 80mm	10
34.293.0018.0 / CL-3040	3" x 4" / 80 x 100mm	10
34.293.0019.0 / CL-4022	4" x 2¼" / 100 x 60mm	10
34.293.0020.0 / CL-4030	4" x 3" / 100 x 80mm	10
34.293.0021.0 / CL-4040	4" x 4" / 100 x 100mm	5
34.293.0022.0 CL-6040	6" x 4" / 150 x 100mm	5

### Finger Mounted Wire Retainer (with predetermined break lines)

PART NUMBER Wieland / Iboco	STANDARD CARTON Lengths
34.293.0034.0 / TR1	50
34.293.0035.0 / TR1E	50



PART NUMBER Wieland / Iboco	USE WITH DUCT NOMINAL HEIGHT (inch / mm)	STANDARD CARTON Quantity
34.293.0023.0 / SEP-15E	1½" / 40mm	32
34.293.0024.0 / SEP-22E	2¼" / 60mm	20
34.293.0025.0 / SEP-30E	3" / 80mm	12



## SEPARATORS

(for T1/ T1E only)



## MOUNTING INSERTS

(for T1/ T1E 15xx and larger)

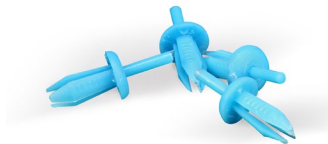
PART NUMBER Wieland / Iboco	STANDARD CARTON Quantity
34.293.0007.0 / ZP1	100
34.293.0008.0 / ZP2	50



## IDENTIFICATION TAG (DUCTMARK)

(for standard finger density only)

PART NUMBER Wieland / Iboco	STANDARD CARTON Quantity
34.293.0026.0 / DM1	50



## WIRE DUCT RIVETS

(DUCTFIX) (for T1/ T1E, for NAB use R6N)

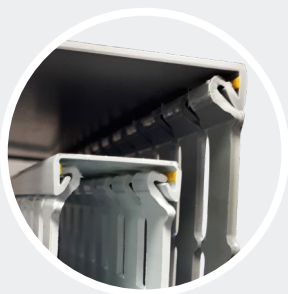
PART NUMBER Wieland / Iboco	STANDARD CARTON Quantity	MATCHING RIVET TOOL
34.293.0027.0 / R4	250	B4 or RT4
34.293.0028.0 / R6N	250	B6
34.293.0029.0 / R6O	250	RT6

\* Hole size R4 - 5/32" (4 mm) – R6 - 7/32" (5.5 mm)



## RIVET TOOLS

PART NUMBER Wieland / Iboco	STANDARD CARTON Quantity	TYPE
34.293.0030.0 / B4	1	Pastic
34.293.0031.0 / B6	1	Plastic
34.293.0032.0 / RT4	1	Metal
34.293.0033.0 / RT6	1	Metal



## NON-SLIP COVER

- + Maximum grip
- + Minimum encumbrance
- + Now available on **T1 and NAB** ducts!



# FLAWLESS CUTS

The tools for bur-free and dust-free cuts, quickly.

Whether you need a hand cutter for quick cuts on the go, or a bench mounted cutter for large capacity cutting, these heavy-duty steel blades are ideal.



## HAND DUCT CUTTER

PART NUMBER Wieland / Iboco	TOOL	QUANTITY
34.293.0036.0 / SX-15	Duct cutter	1
34.293.0037.0 / SX-15B	Blade replacement	1



## DUCT AND TUBING CUTTER

PART NUMBER Wieland / Iboco	TOOL	QUANTITY
34.293.0038.0 / WT-2	Duct cutter	1
34.293.0038.0 / WT-2B	Blade replacement	1



## HAND DUCT CUTTER, BENCH MOUNTED

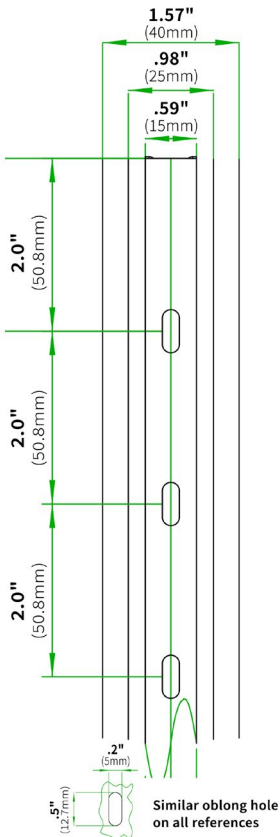
PART NUMBER Wieland / Iboco	TOOL	QUANTITY
34.293.0040.0 / BA7	Bench mounted duct cutter	1
34.293.0041.0 / BL-120	Blade replacement	1

### YOUR BENEFITS

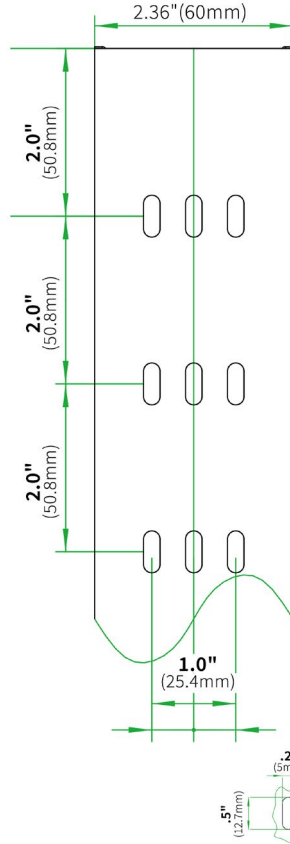
- + Fast, quiet and **dust-free** operation!
- + Heavy-duty **stainless steel** blade
- + Smooth, **burr-free cuts** on duct and cover

# DIMENSIONS NAB DUCTS

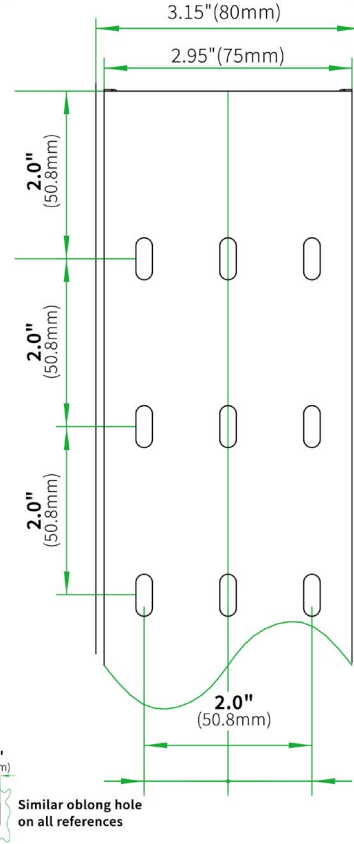
**34.296.05xx/10/15**  
(15/25/40mm)



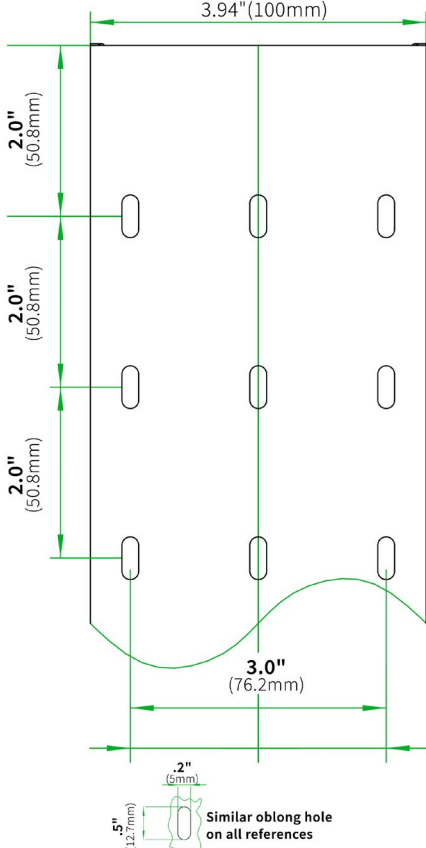
**34.296.22xx (60mm)**



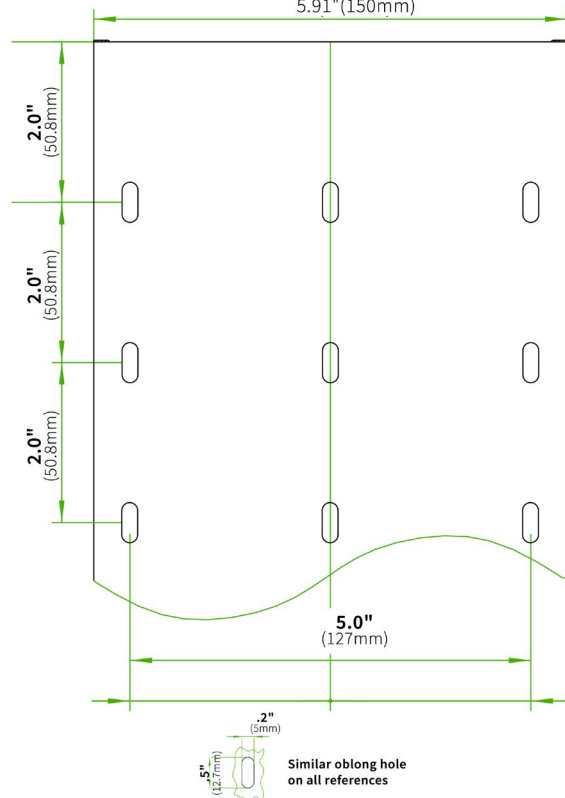
**34.296.30xx (75/80mm)**



**34.296.40xx (100mm)**

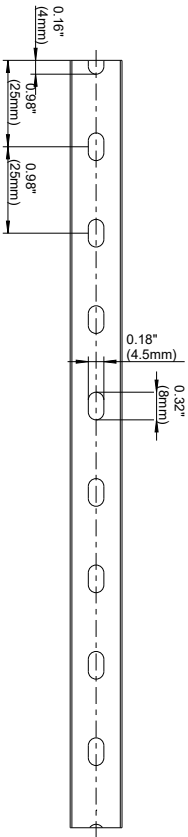


**34.296.60xx (150mm)**

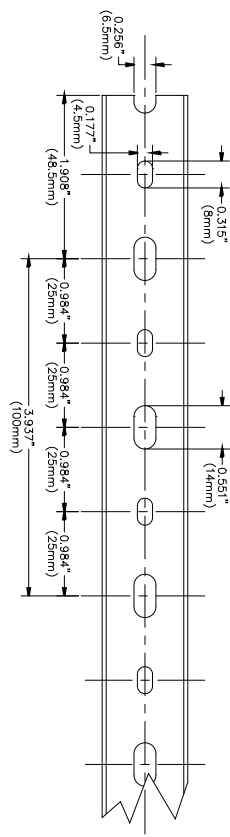


# DIMENSIONS T1/T1E DUCTS

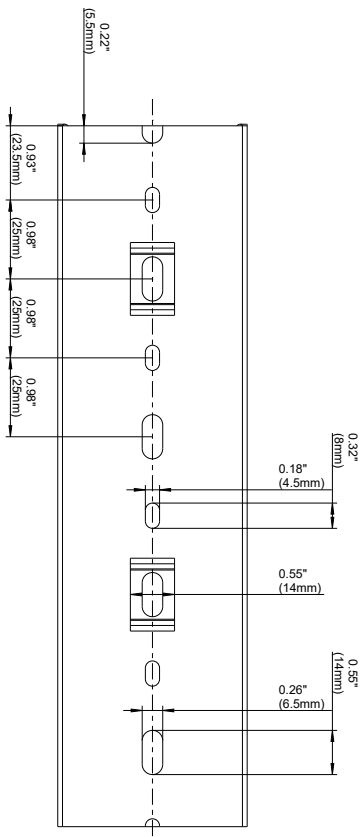
34.293.05xx



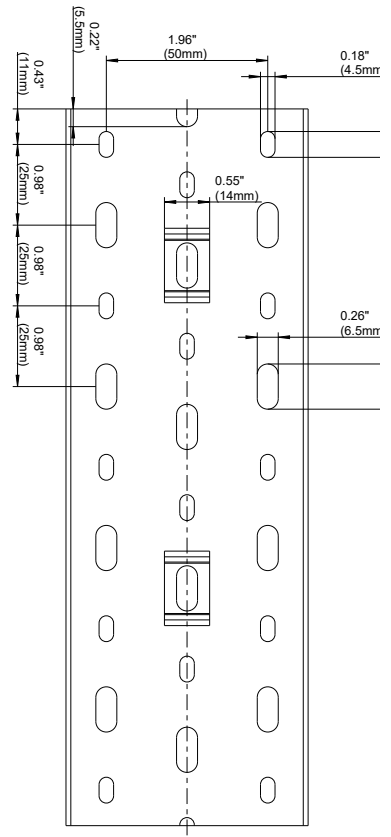
34.293.10xx



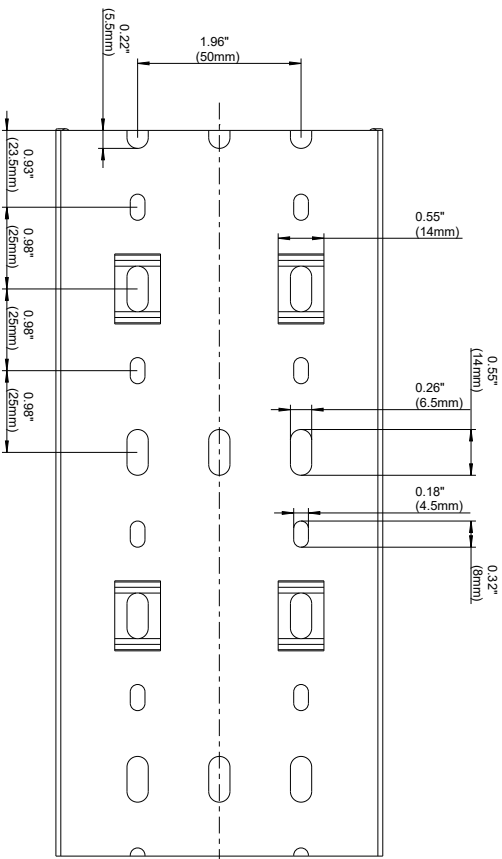
34.293.15xx /22



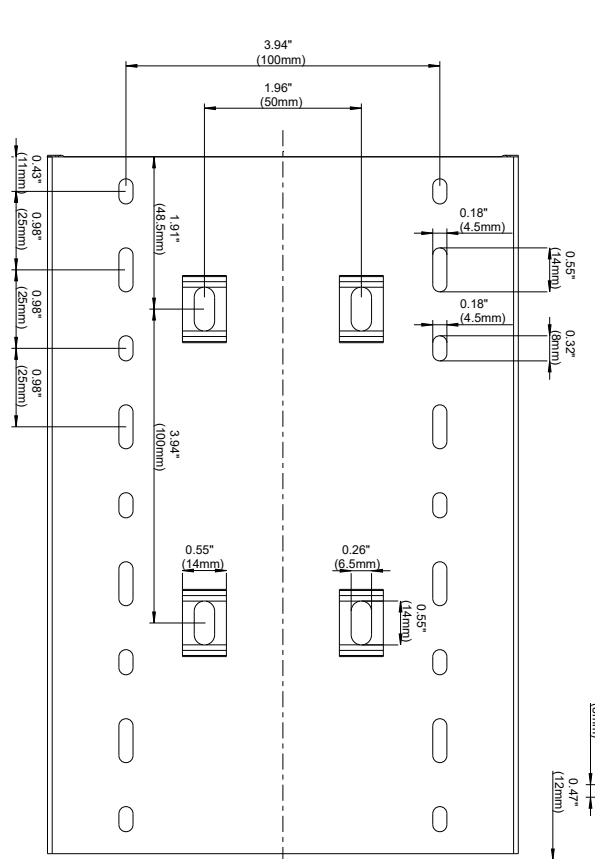
34.293.3050 only



34.293.30xx /40



34.293.60xx





# wieland

**Wieland Electric Inc.**

3570 Platinum Drive, Unit 7  
Mississauga, Ontario L5M 2R7

---

Phone +1 905 829 8414

Fax +1 905 829 8413

*[technical.support@wieland-electric.com](mailto:technical.support@wieland-electric.com)*

34.205.0176.0 05/23 A

Global sales partners in over 70+ countries:

**[www.wielandinc.com](http://www.wielandinc.com)**